

# 2014 Environmental Permitting Summer School

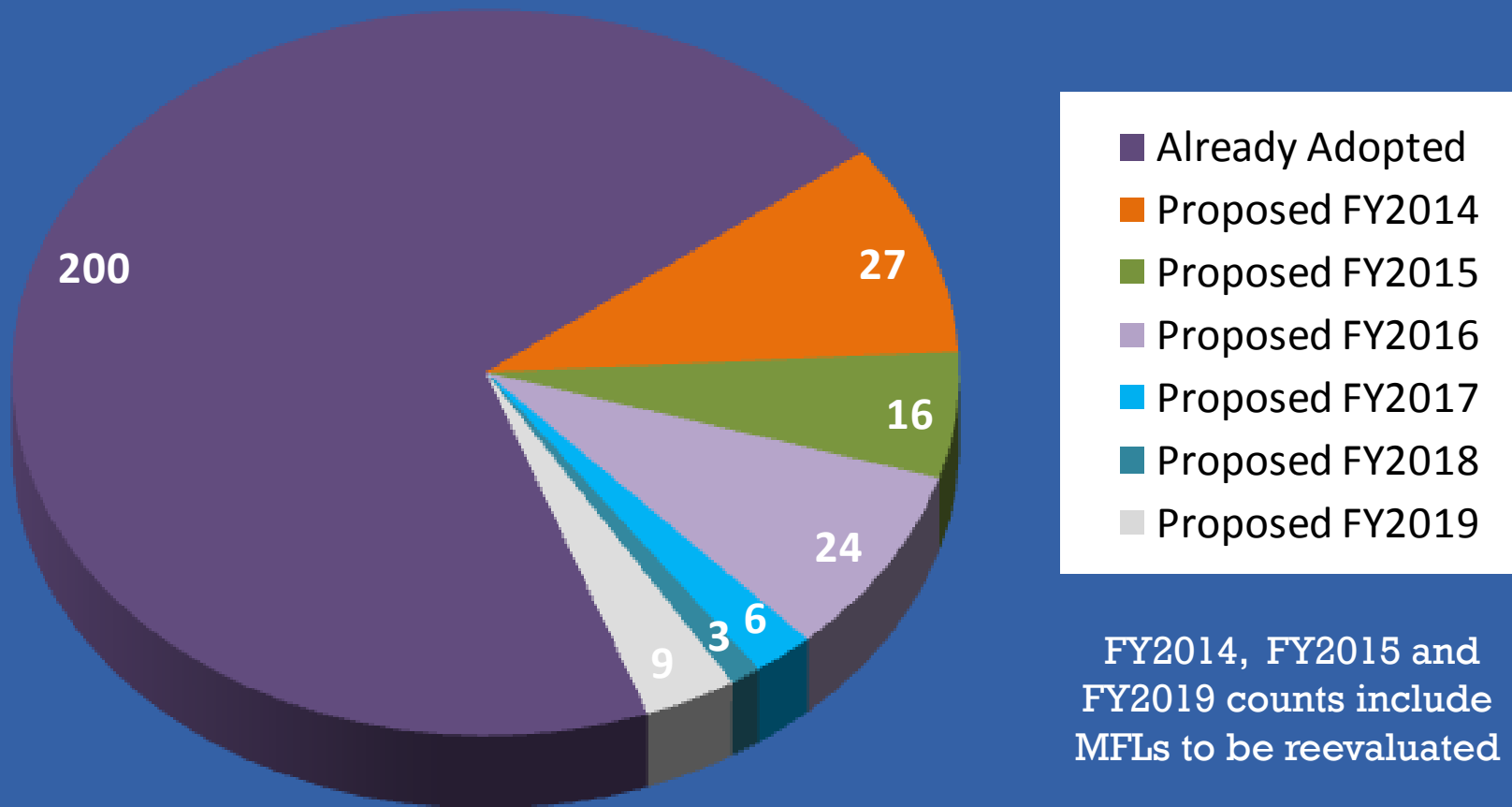
## **Minimum Flows and Levels in the Southwest Florida Water Management District**

Mark Hammond, P.E.  
Resource Management Division Director,  
SWFWMD



# Minimum Flows and Levels Status

**285 MFLs Included on SWFWMD Priority List and Schedule  
200 or 70% Completed**

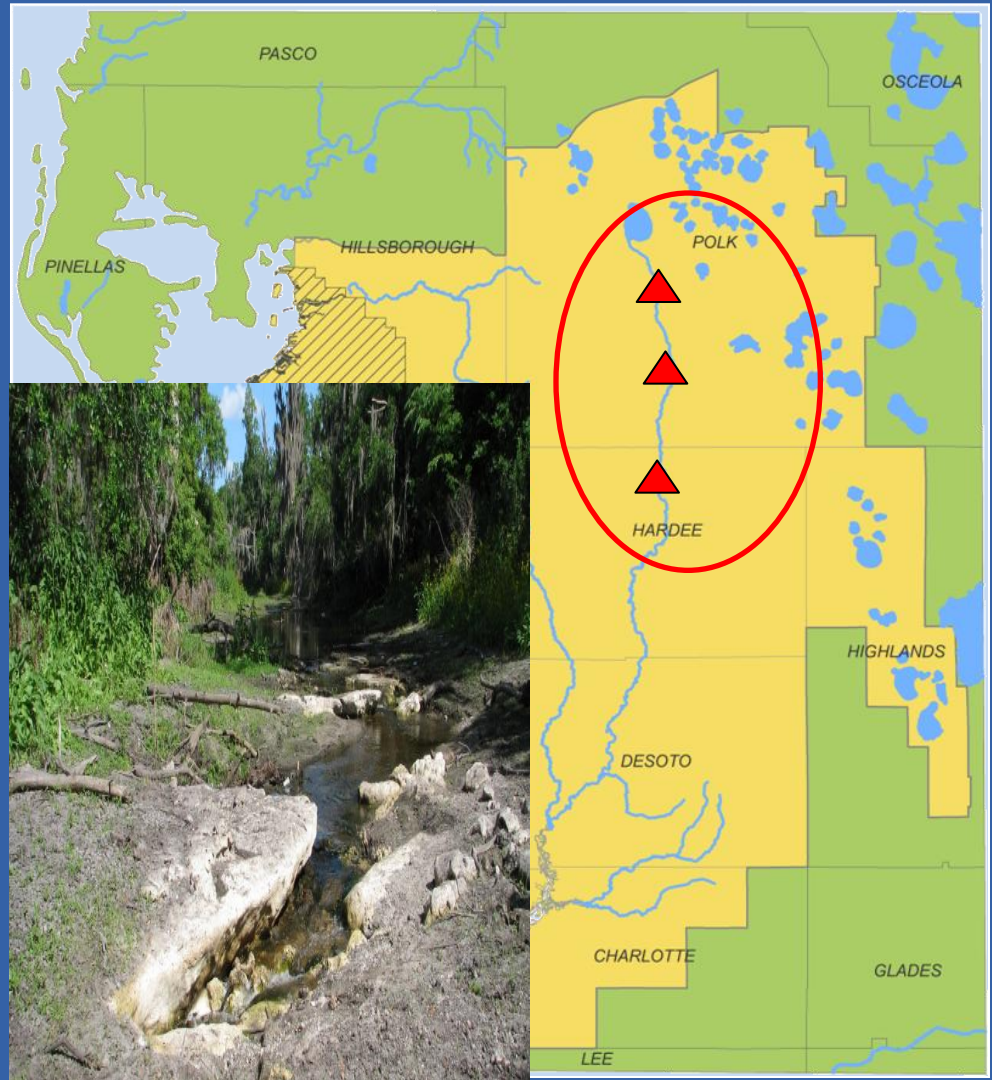




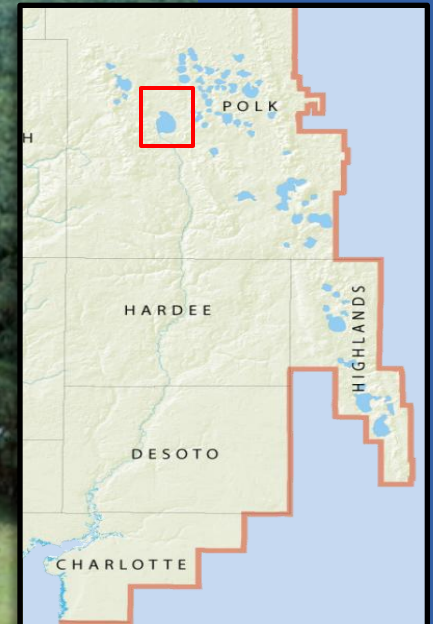


# In Recovery Stage

- Upper Peace River
- Part of SWUCA Recovery Strategy
- Meets MFL 70% of days
- Restore by 2025



# Lake Hancock



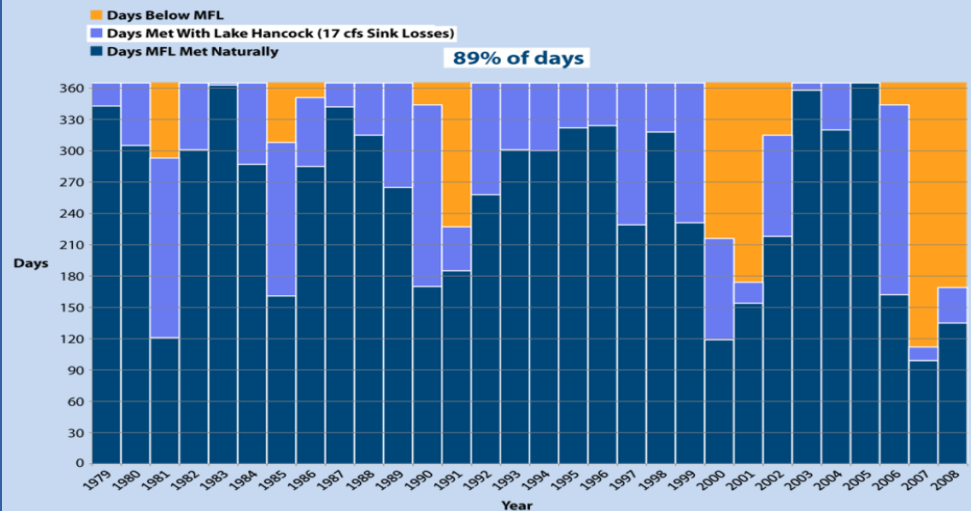


# Lake Level Modification Goals

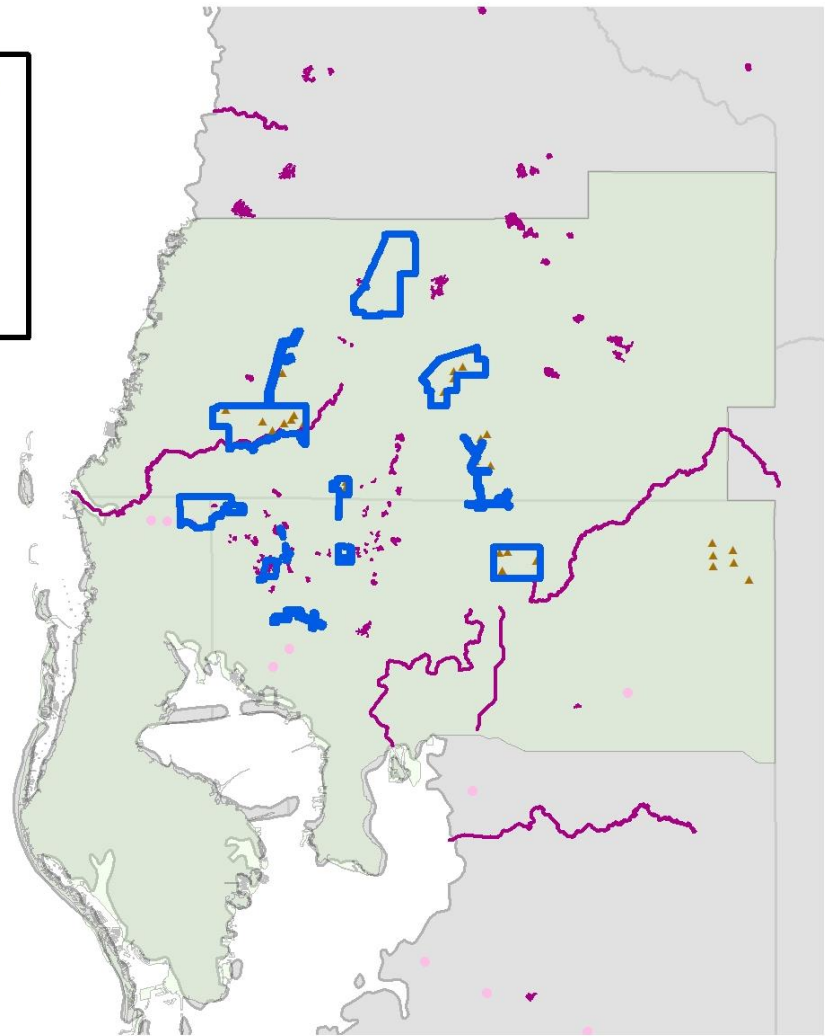
- Restore historic lake level
- Meet MFL 89%
- Provide up to 17 cfs of recharge to sinks
- Preserve 4,800 acres of floodplain



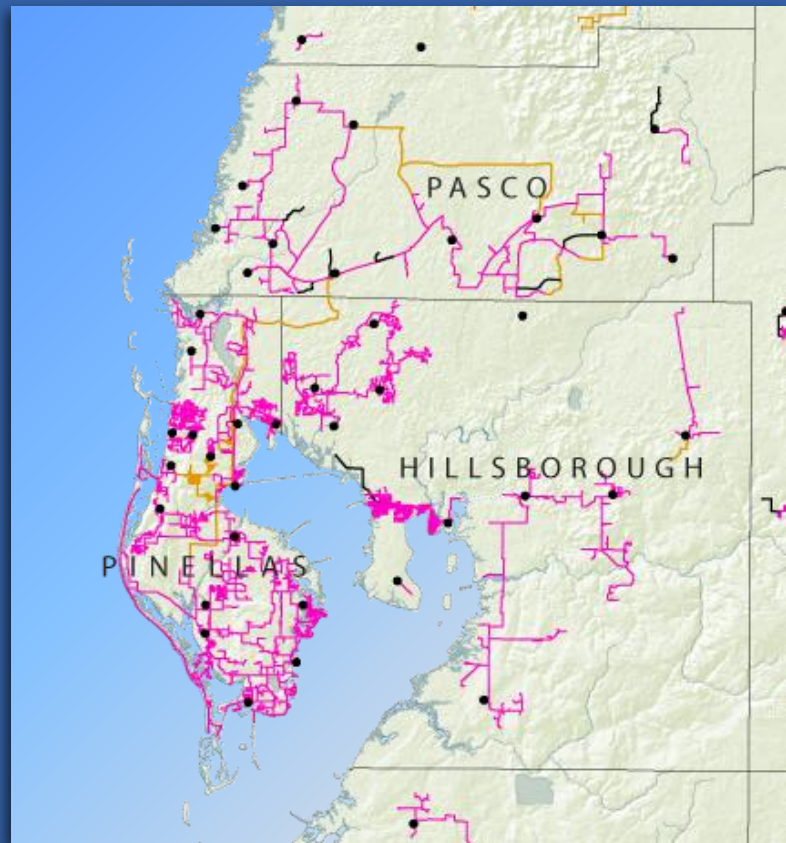
**Days Fort Meade Flows Met MFL (27 cfs)  
with Lake Hancock (17 cfs Sink Losses)**



# MFLs and the Central System Facilities in the Northern Tampa Bay WUCA

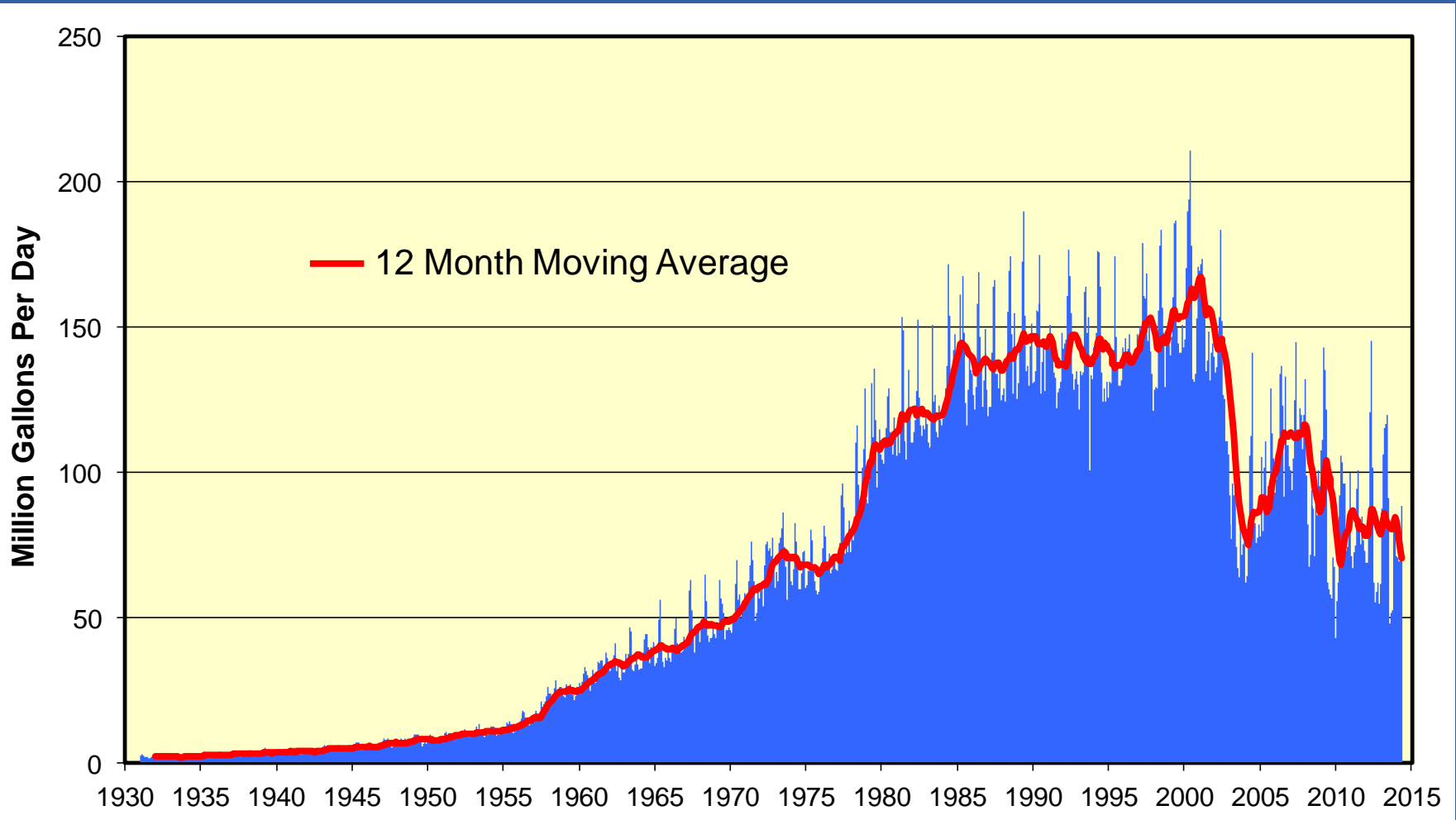


# Alternative Water Supplies



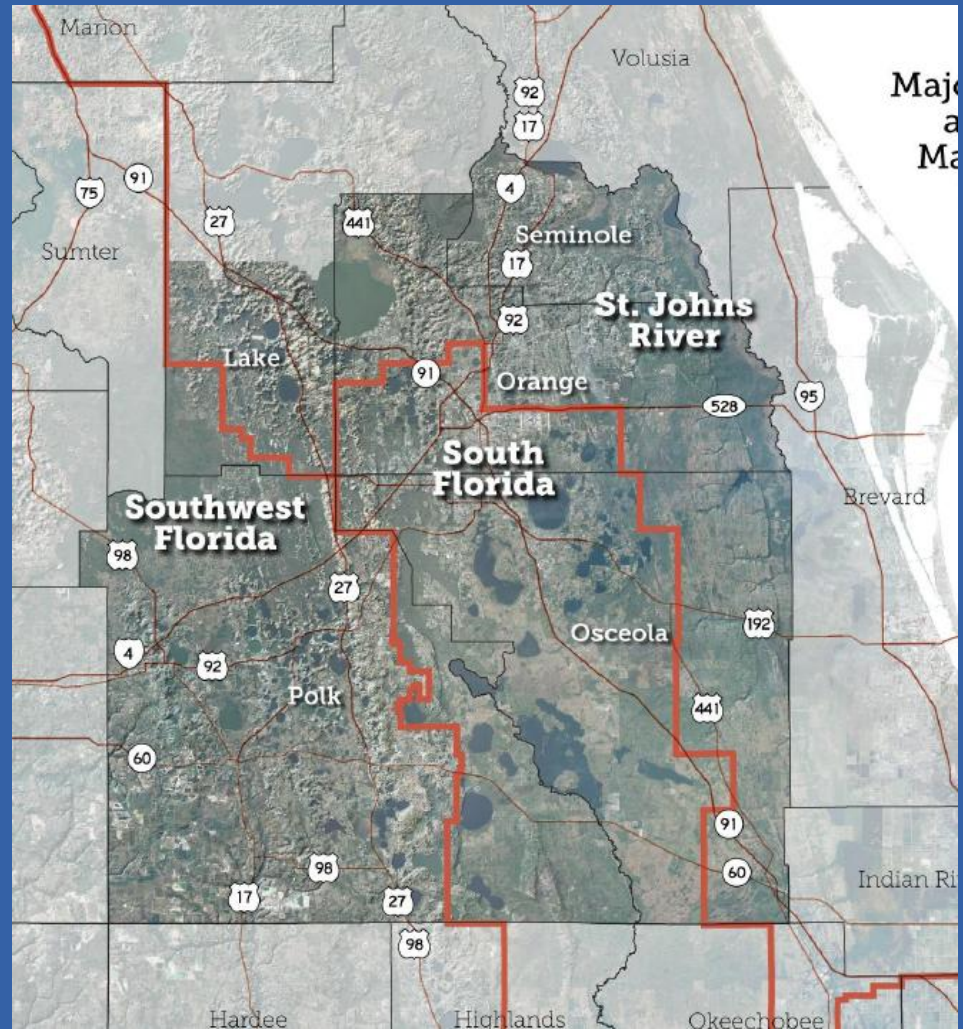


# Tampa Bay Water Consolidated Permit Wellfield Water Use



# Central Florida Water Initiative

**Includes portions of  
three Water Management  
Districts**



# **MFLs Coordination in the CFWI Area**

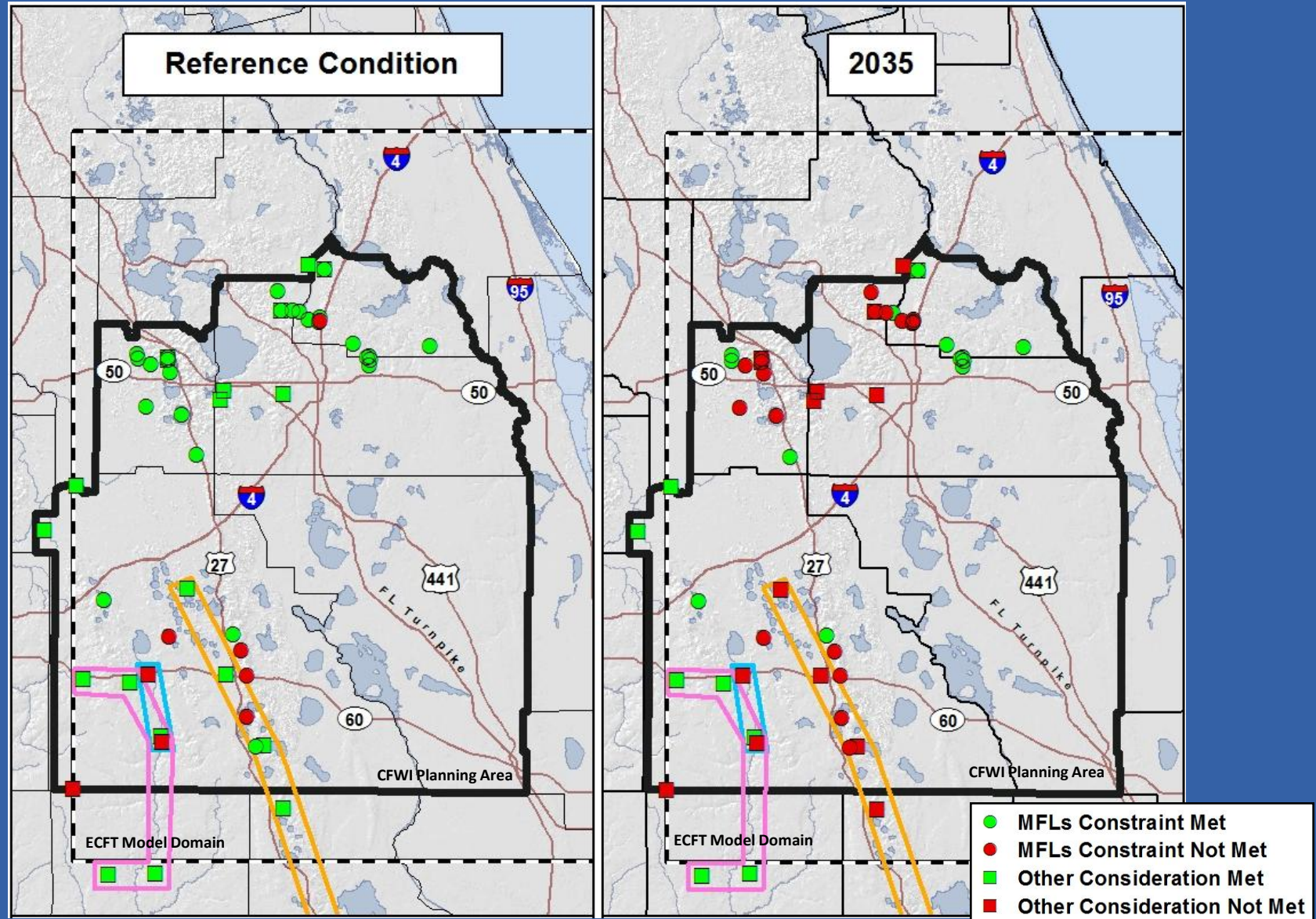
CFWI Steering Committee approved MFL-related documents describing:

- Standard peer review process for MFLs and reservations in the CFWI area
- Options for consistently evaluating the status of MFLs in the CFWI area
- Processes used for developing MFLs priority lists and schedules in the CFWI area



# MFL Measuring Stick Example Results

## Reference Condition & 235 Withdrawal Condition



# In the North



Questions?