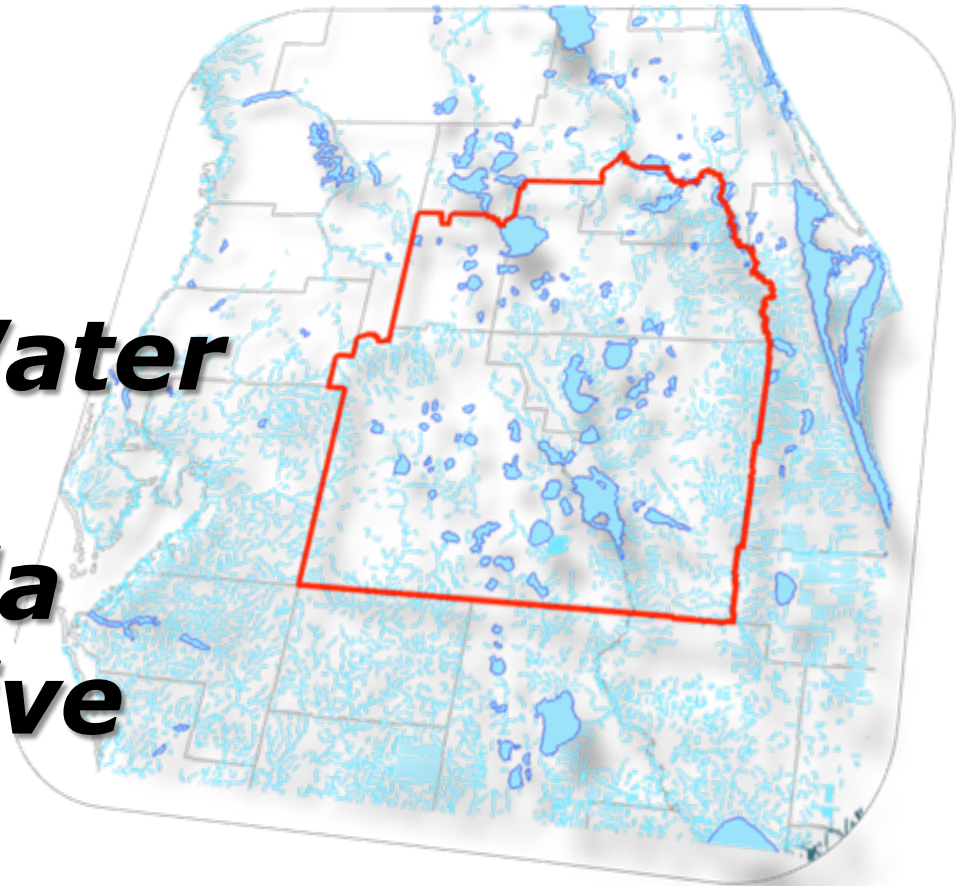


***Session PP
Alternative Water
Supplies:
Central Florida
Water Initiative***



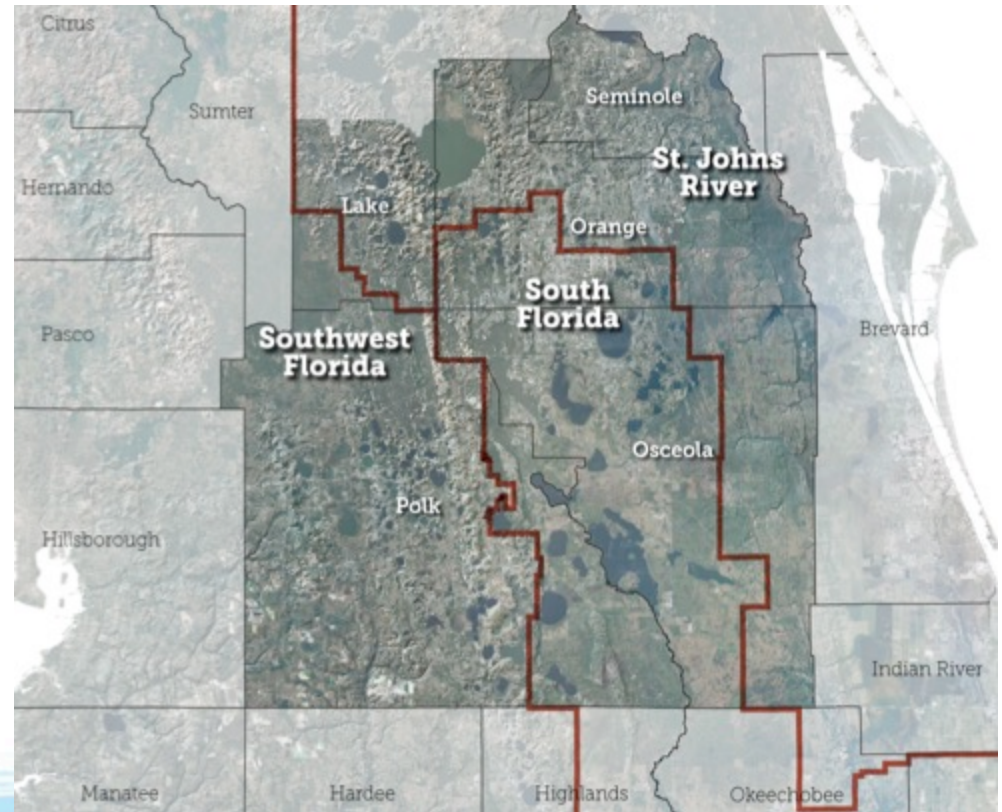
Lennart J. Lindahl, P.E.

Assistant Executive Director

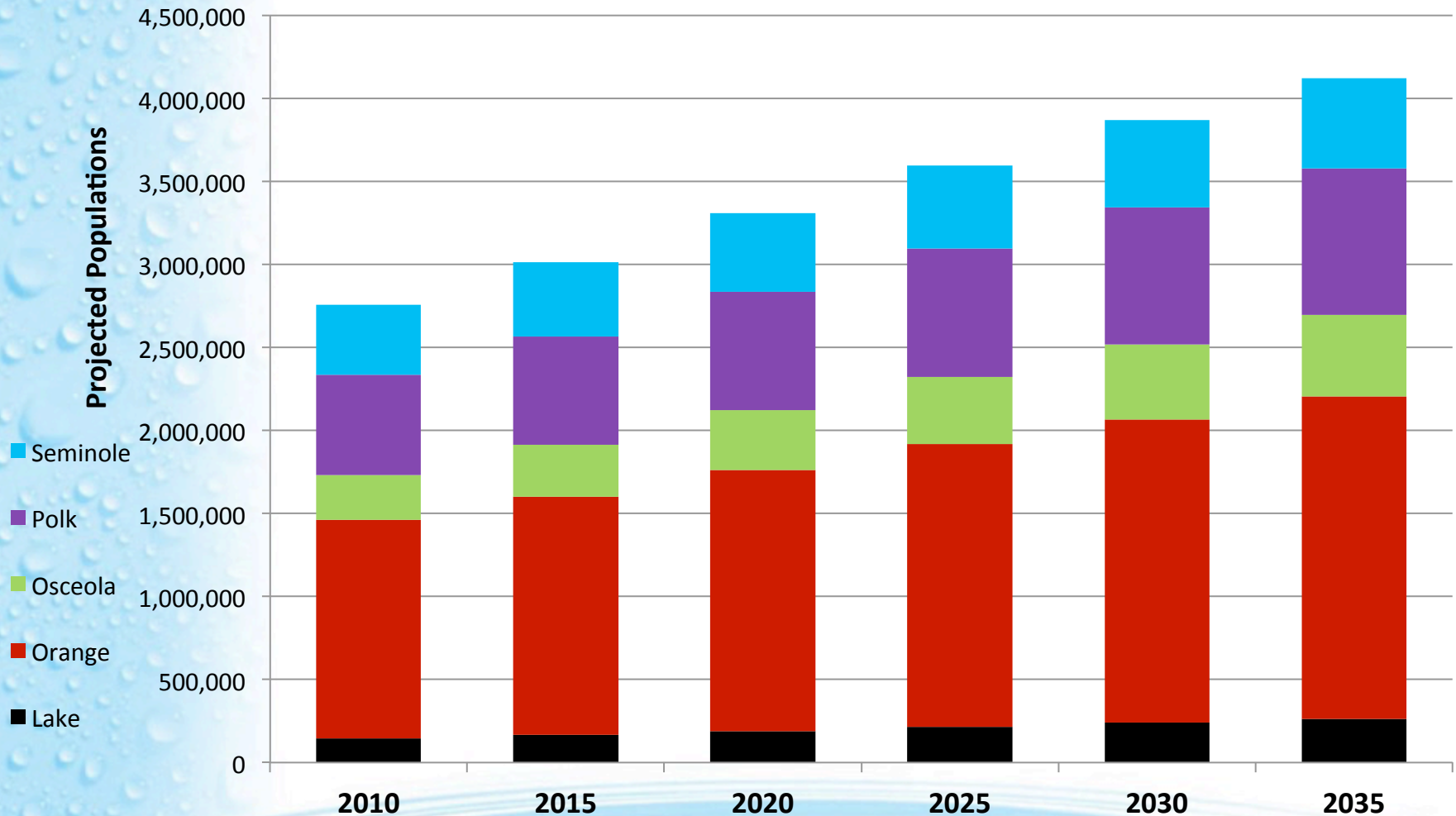
South Florida Water Management District

What is the CFWI?

A collaborative water supply planning effort to protect, develop, conserve and restore central Florida's water resources.



Projected Population

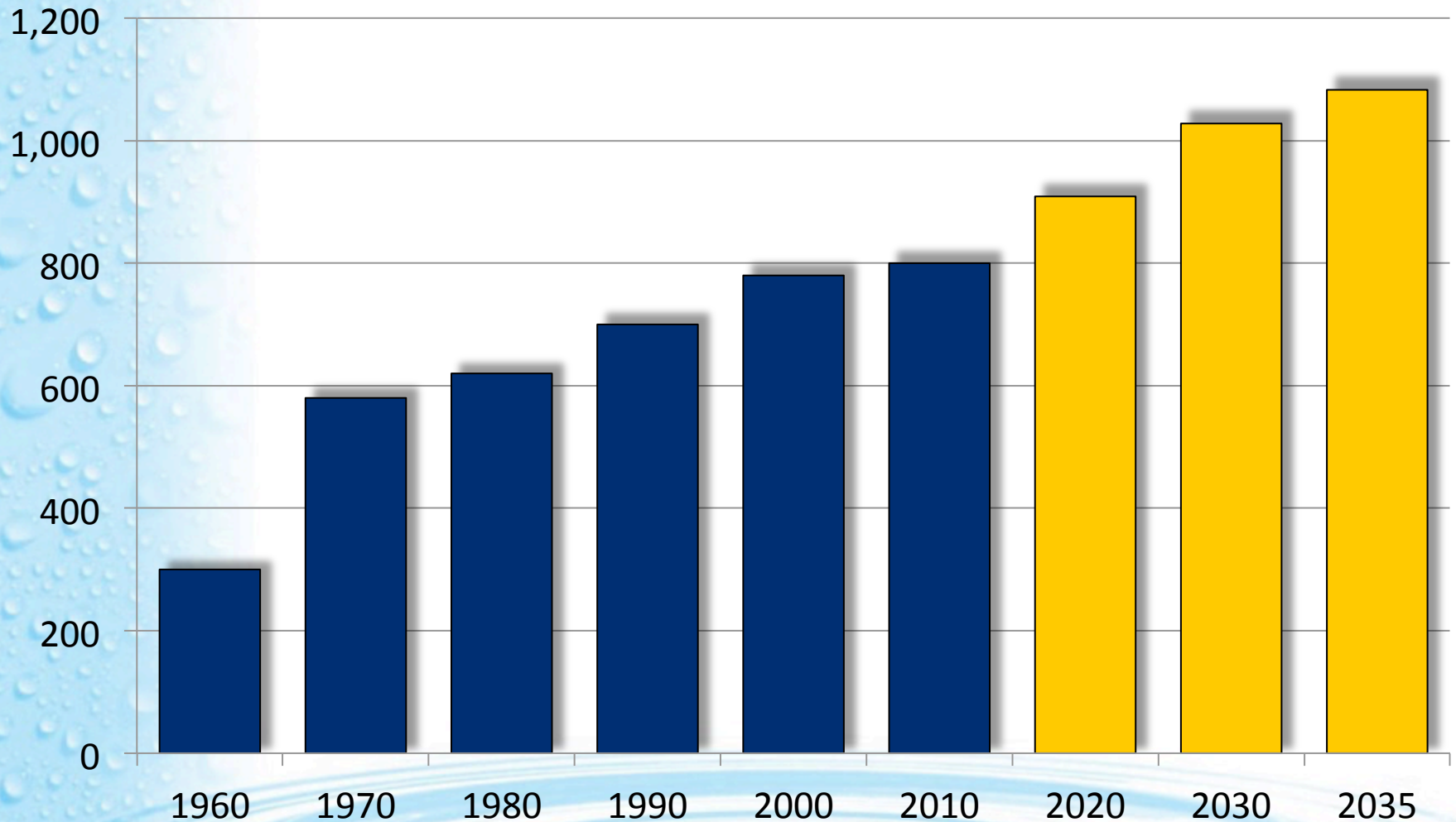


Projected Increase of 1.4 Million People

Water Use

All Classes

MGD



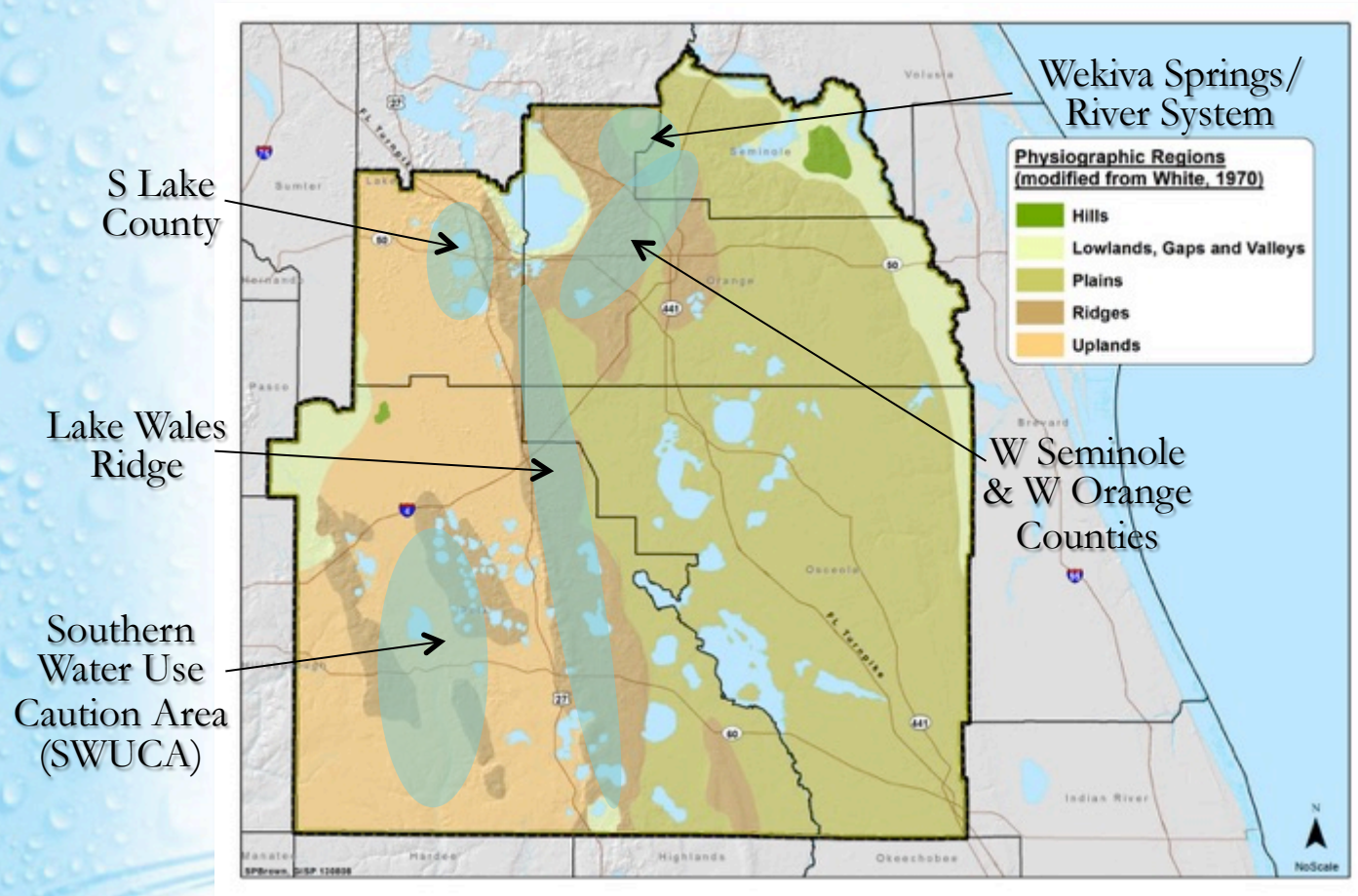
Historic

Projected

Water Resource Evaluation

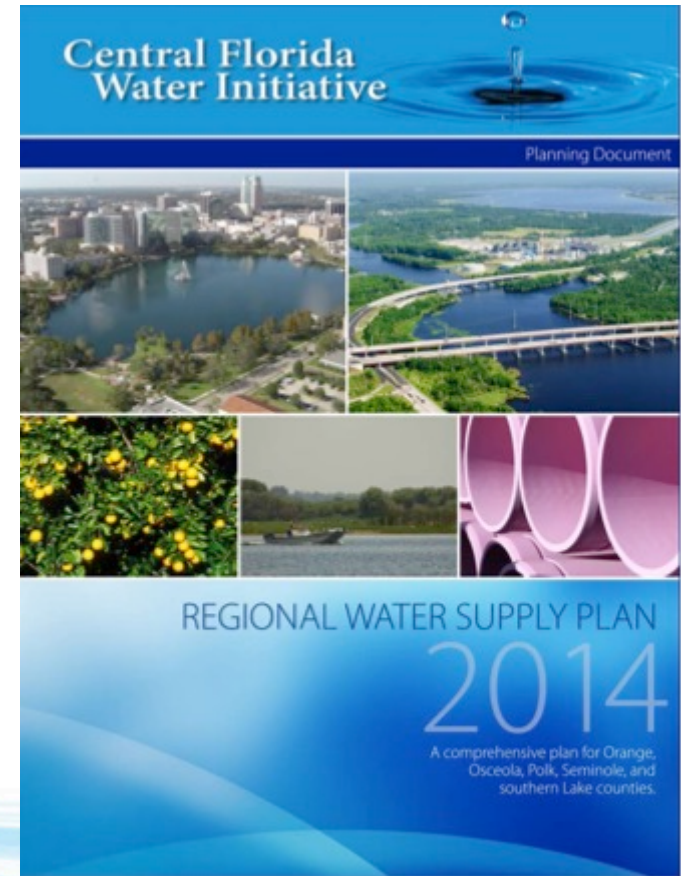
- Future demands estimated and aquifer changes evaluated
- Availability of groundwater determined from multiple measuring sticks to ensure protection of water resources and existing water users
- Traditional groundwater sources can meet some, but not all projected and permitted needs in the CFWI.

Primary Areas Susceptible to Groundwater Withdrawals



One Plan for CFWI Region

- Developing first-ever Regional Water Supply Plan
- Collaborative effort between Districts, FDEP, FDACS, utilities and other stakeholders
- Technical teams provided strong scientific foundation for development of Plan



Water Supply Plan

- Traditional Source
 - Fresh groundwater (surficial, intermediate, and Floridan aquifers)
- Non-traditional / AWS
 - Brackish Groundwater
 - Surface Water
 - Seawater
 - Reclaimed Water
 - Reservoirs
 - Aquifer Storage and Recovery

Water Supply Plan

- Plan identifies 142 potential water supply development project options:
 - 37 brackish groundwater
 - 15 surface water
 - 87 reclaimed water
 - 3 management strategy projects
- Projects may produce up to a total of 455 mgd in additional water supply by 2035

Capital Costs

- Brackish groundwater and surface water projects could generate an estimated potential of up to 284 mgd of water
 - Estimated capital cost of up to **\$2.5 billion**
- Reclaimed water projects could deliver 121 mgd (potentially 165 mgd with supplemental sources) of projected increase in reuse
 - Estimated capital cost of **\$452 million**

Solutions Team Sub-teams

- Surface water (dispersed storage, reservoirs)
- Groundwater
- Reclaimed water
- Conservation & other management strategies (agriculture & urban landscape)
- Environmental Evaluation
- Other (stormwater, etc.)

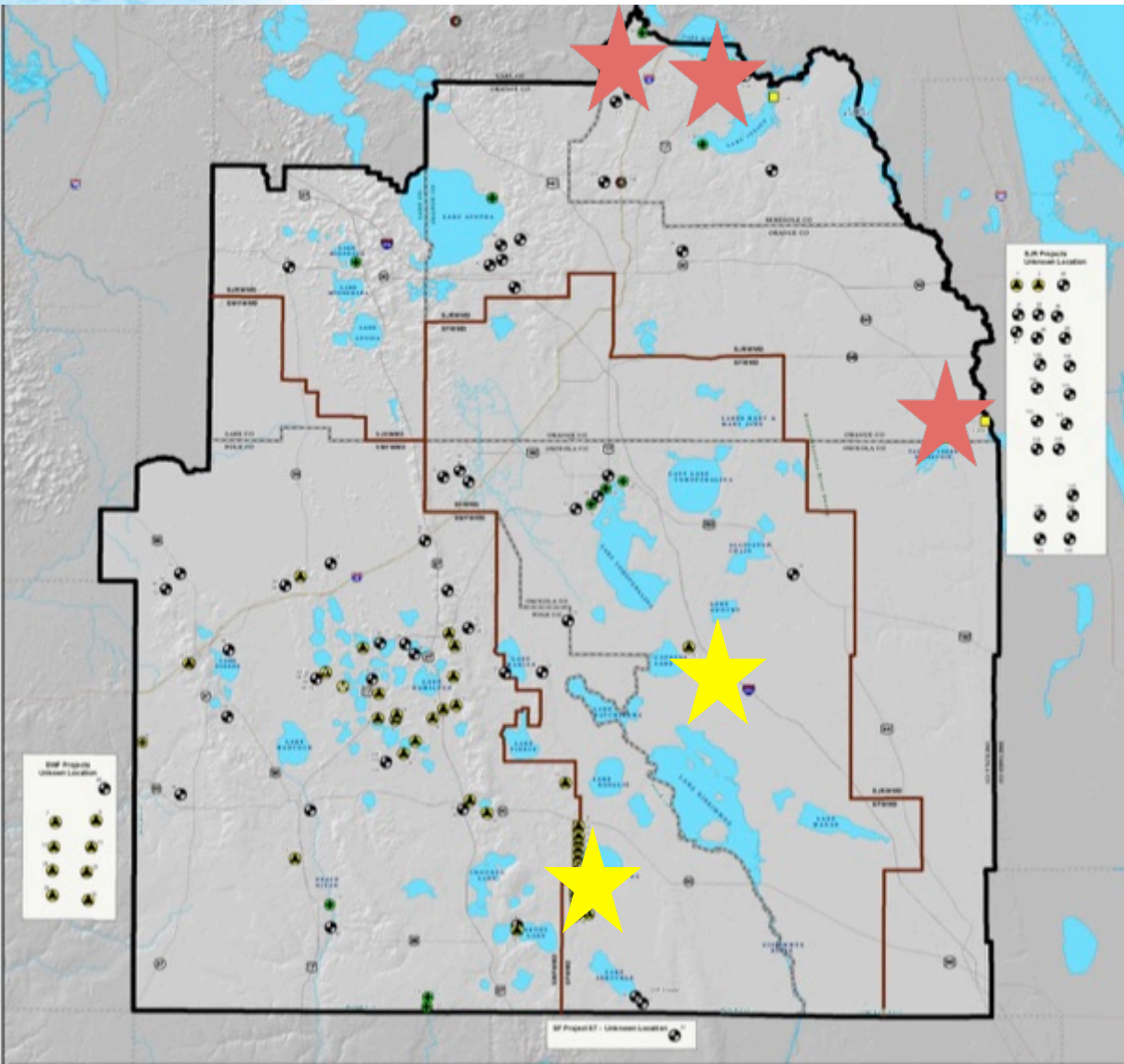
Solutions Team Sub-teams

- Focus on regional, multi-jurisdictional project options
- Evaluate project costs
- Support partnerships, identify conjunctive use opportunities and maximize efficiencies
- Develop the CFWI Implementation Plan

Central Florida Water Initiative

Five Major Projects

1. St. Johns River at Yankee Lake, 50 mgd
2. St. Johns River at SR46, 55 mgd
3. St. Johns River at Taylor Creek Reservoir, 43 mgd
4. Brackish groundwater at Cypress Lake, 30 mgd
5. Lower Floridan at SE Wellfield, 30 mgd



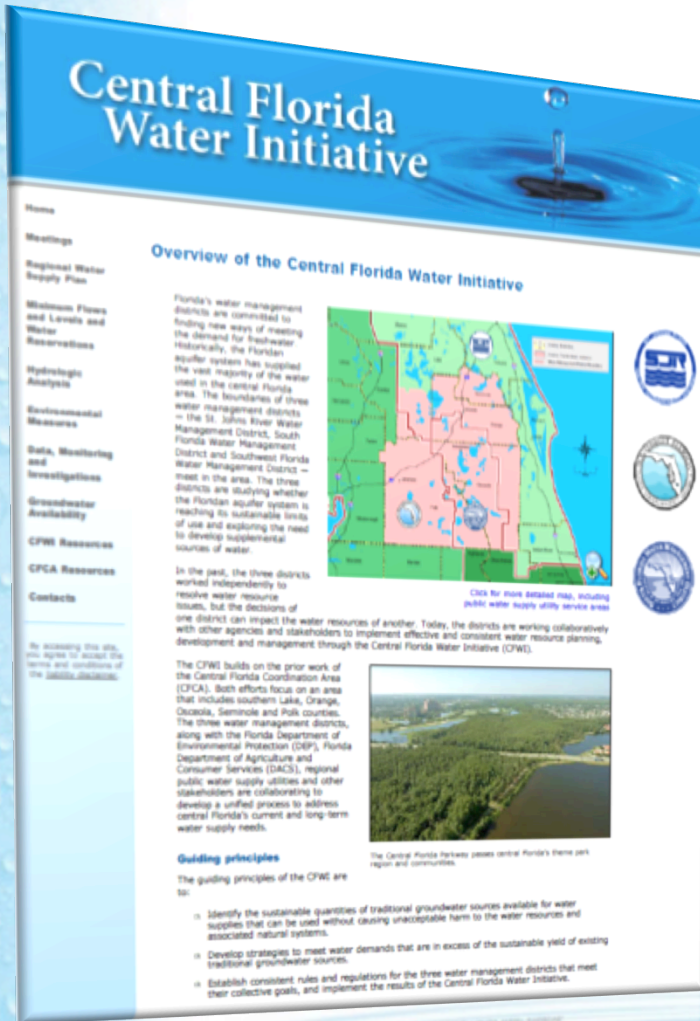
SJRWMD - SWFWMD - SFWMD CFWI Water Supply Options Projects

- Brackish GW (PWS)
- Reclaimed Water
- Surface Water (PWS)
- Surface Water or Sea Water (PWS)
- Surface Water - Brackish (PWS)
- Reclaimed Water and Storm Water
- CFWI Boundary
- Water Management Boundary
- County Boundary



1 inch = 10 miles

"Conservation measures by all users will continue to have an important role in managing increasing water demands and enabling water supply systems to support more users."



Additional
information
can be found at
cfwiwater.com

Thank you.