

# **Northwest Florida Water Management District**



## **North Florida Water Challenges**



# **Active Development of Minimum Flows and Levels**

**Prior to 2012**

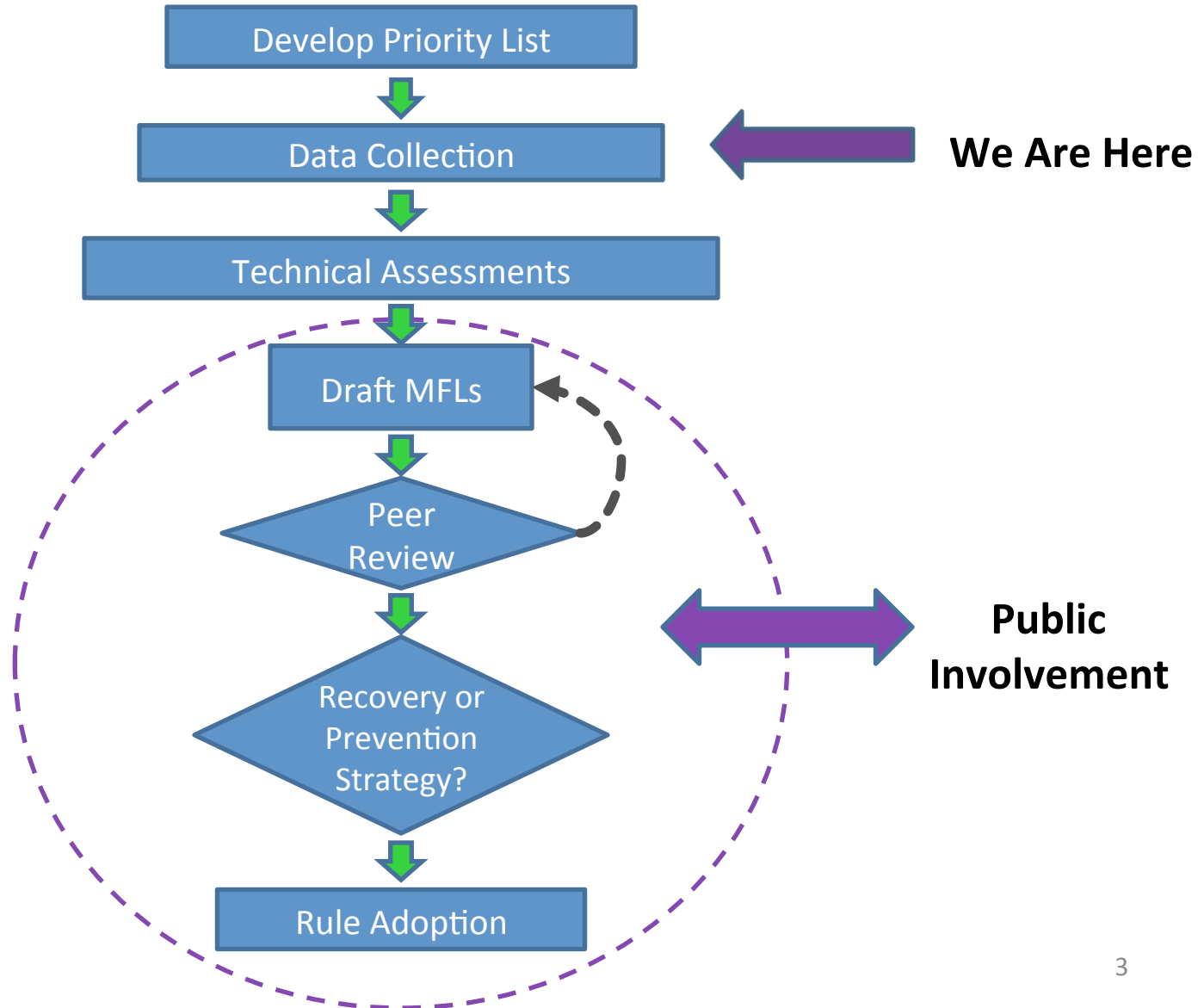
**- 0 -**

**2012 - Present**

**- 6 -**



# MFL Development Process





# MFL Development Challenges

- Limited ground and surface water data
- Insufficient ecological data
- Almost no groundwater flow models developed
- Complex groundwater and surface water interactions
- Estimated annual cost: \$2,300,000 million



# MFL Accomplishments – FY14

- Developed Work Plans for:
  - St. Marks River Rise
  - Wakulla Springs
  - Sally Ward Spring
- Initiate Work Plan development for:
  - Jackson Blue Spring
  - Coastal Floridan Aquifer in Okaloosa, Santa Rosa & Walton counties
- Determined MFL strategies for Franklin Co. Floridan Aquifer
- Installed ground and surface water data collection stations
- Initiated hydrologic monitoring of the Spring Creek complex



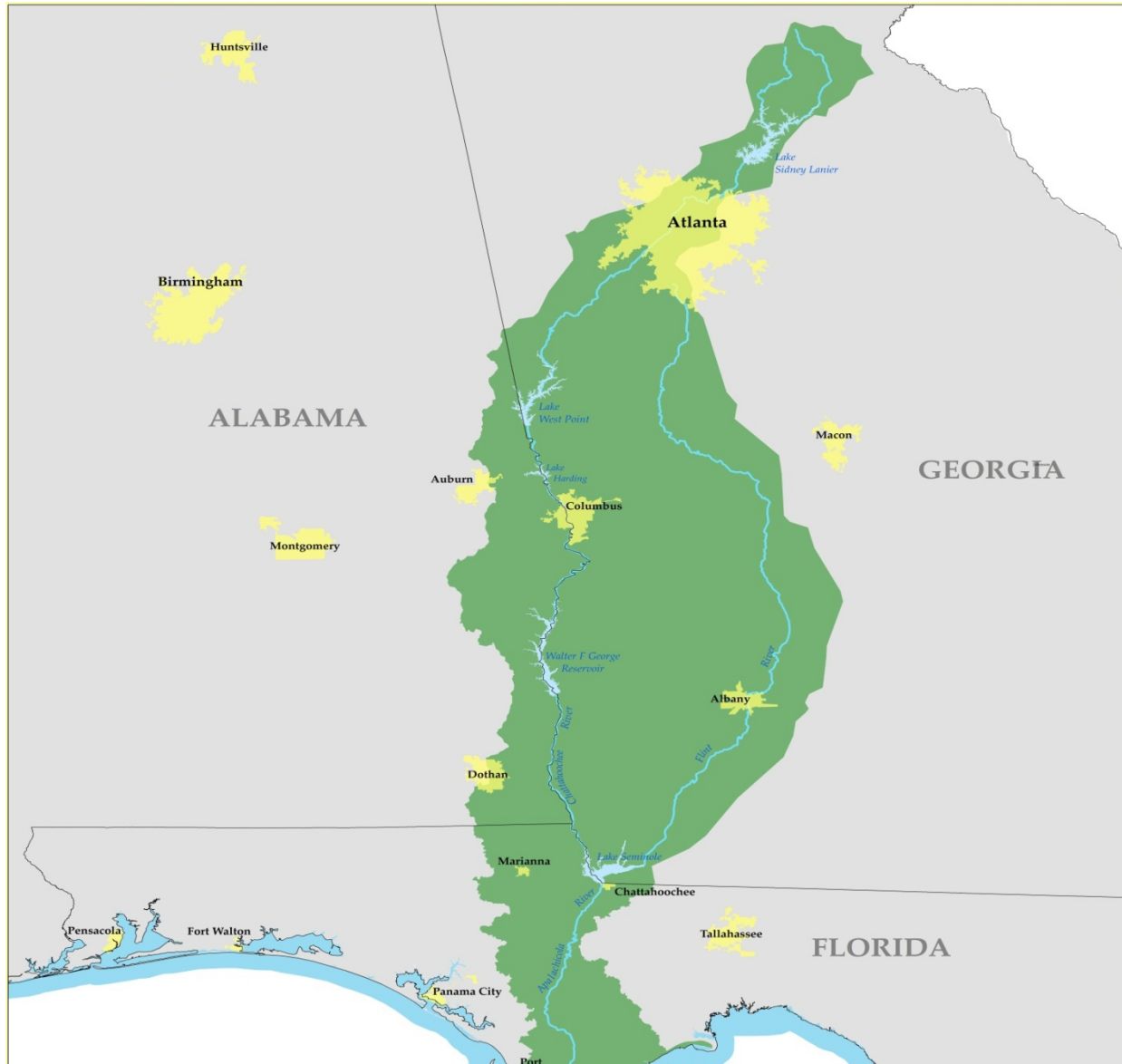
# FY14 MFL Priority List

	MFL Initiation	<u>Estimated</u>	<u>Schedule<sup>1</sup></u>
		Technical Completion	Rule Adoption
Blue font = work underway			
St. Marks River Rise (1 <sup>st</sup> mag)	2013	2018	2020
Wakulla Springs (1 <sup>st</sup> mag)	2013	2021	2023
Sally Ward Spring (2 <sup>nd</sup> mag)	2013	2021	2023
Floridan Aquifer – Coastal Franklin County	2014	2019	2021
Floridan Aquifer–Coastal Region II (SR, OK, WL)	2015	2020	2022
Jackson Blue Spring (1st mag)	2016	2022	2024
Floridan Aquifer – Coastal Bay County	2018	2023	2025
Econfina Creek & Spring Complex (1 <sup>st</sup> & 2 <sup>nd</sup> mag)	2019	2024	2026
Deer Point Lake	2020	2025	2027
Yellow River / Shoal River	2021	2026	2028
Apalachicola and Chipola Rivers	Reservations established		2006

<sup>1</sup> Subject to fiscal constraints, climatic extremes, data & analysis needs, peer review, rule challenge, etc.



# Apalachicola-Chattahoochee-Flint River Basin

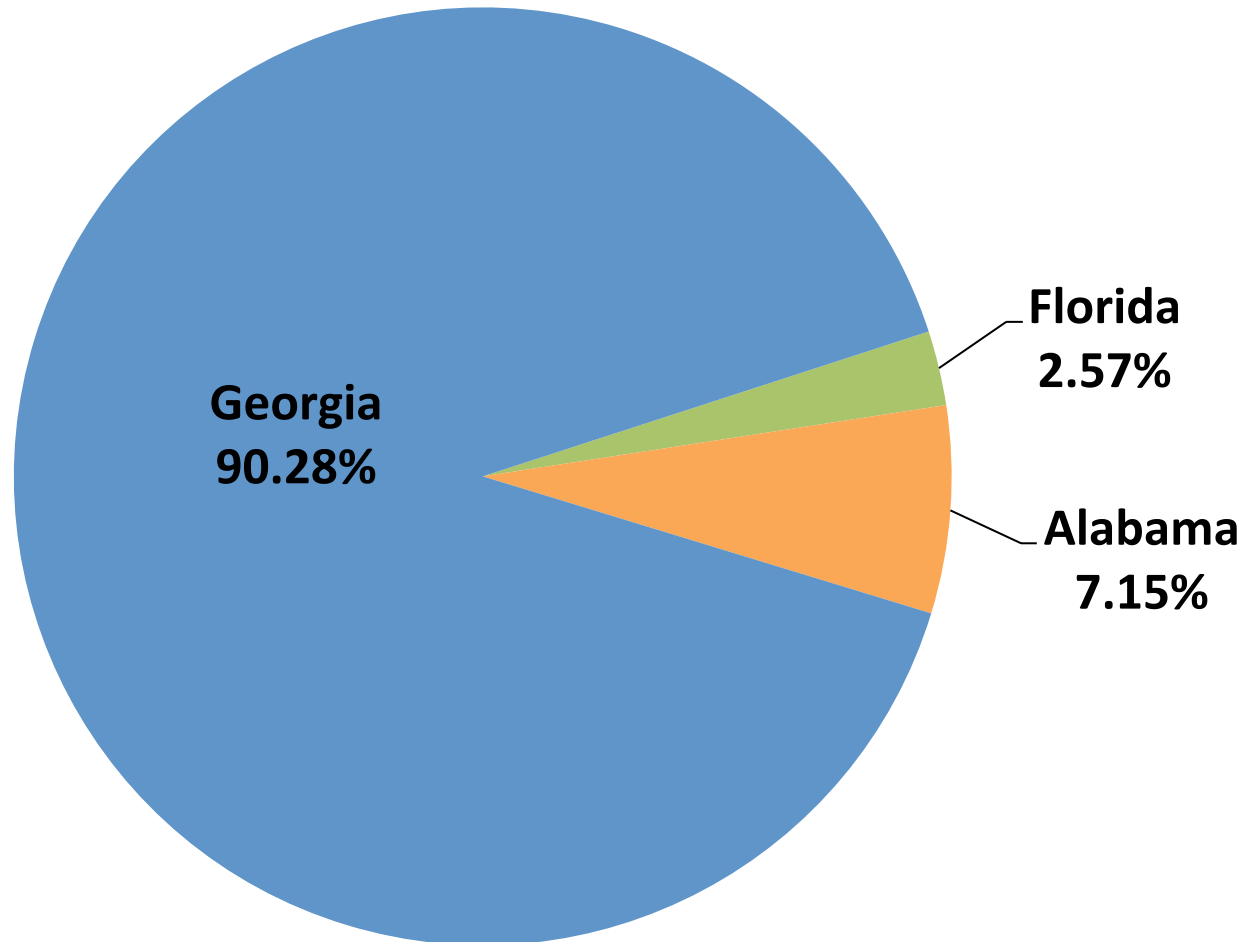




# Water Use in the ACF Basin

***Total Basin Use - 1,202 MGD***

*Excluding power production<sup>1</sup>*







# Water Use in the ACF Basin

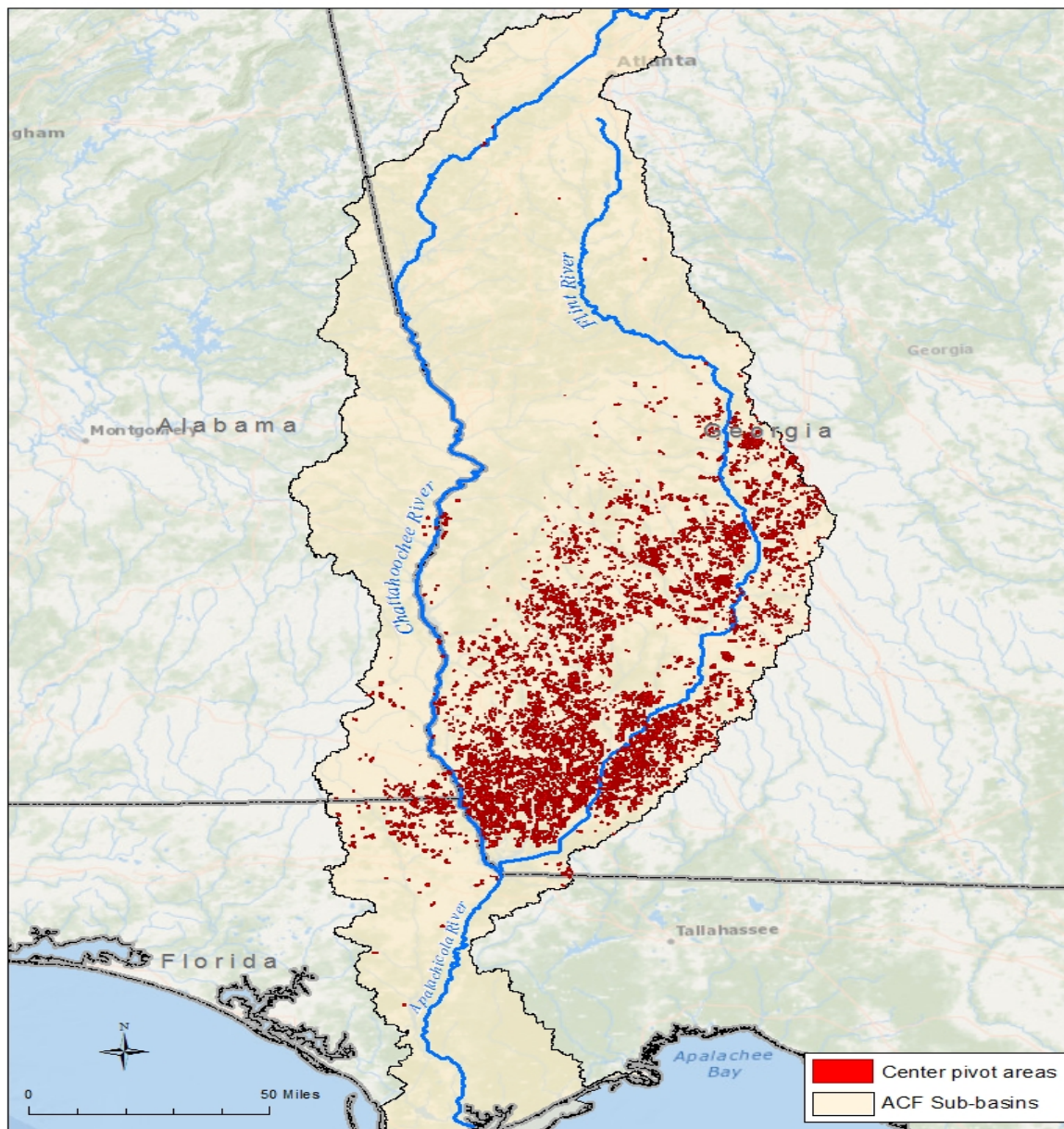
*Estimated Total Water Use, MGD*

*Excluding Power Production*

Category	Alabama	Florida	Georgia
Public Supply	32.4	5.67	570.77
Domestic	1.71	4.23	31.31
Commercial-Industrial	32.11	2.41	156.08
Agriculture	19.69	18.52	326.67
Total	85.91	30.83	1,084.83



# Irrigation Systems





# **Thank you**

**Jon Steverson  
Executive Director**

**Northwest Florida Water Management District  
(850) 539-5999**