



# Florida Department of Environmental Protection

## Submerged Lands & Environmental Resources Coordination

# Special Permit Considerations for Sovereign Lands & Aquatic Preserves

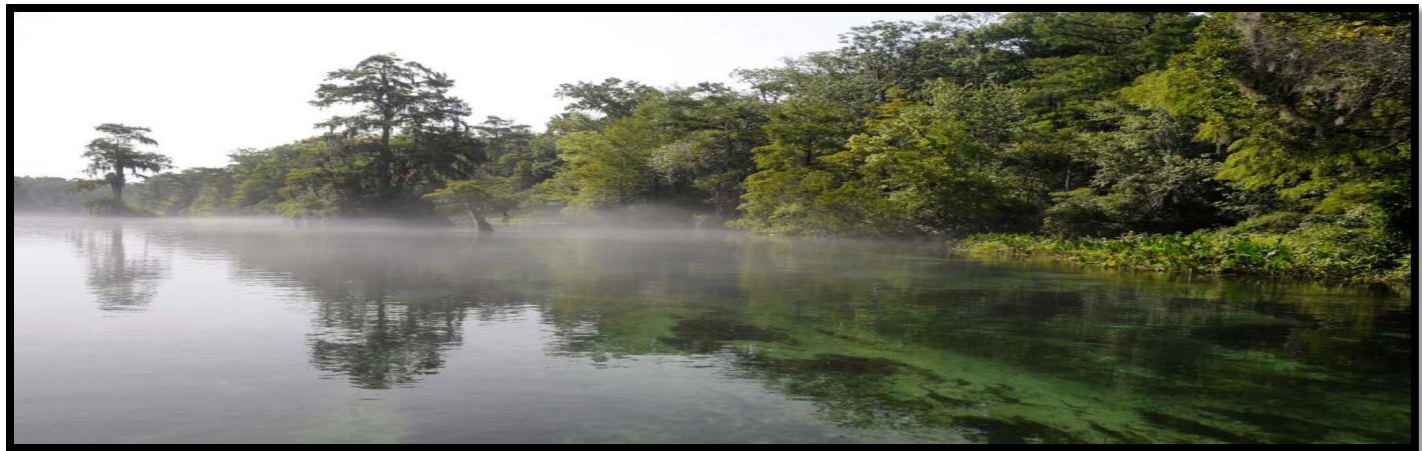
**29<sup>th</sup> Annual Environmental Permitting Summer School**  
**Orlando 2015**  
**Tim Rach**





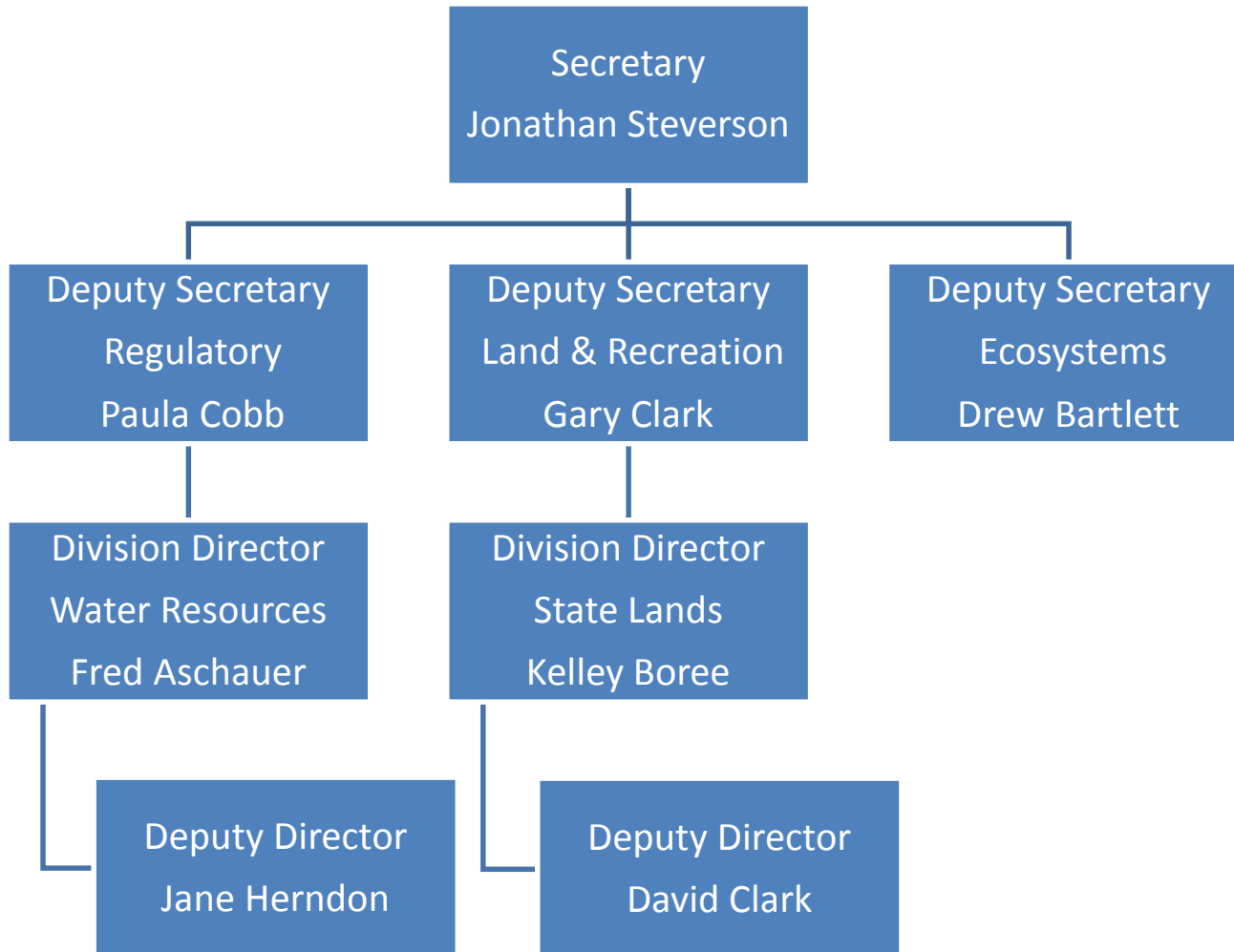
# What's New with DEP?

- *Organizational Structure*
- *Rulemaking*
- *Policy Updates*





# Organization





# Active Rulemaking

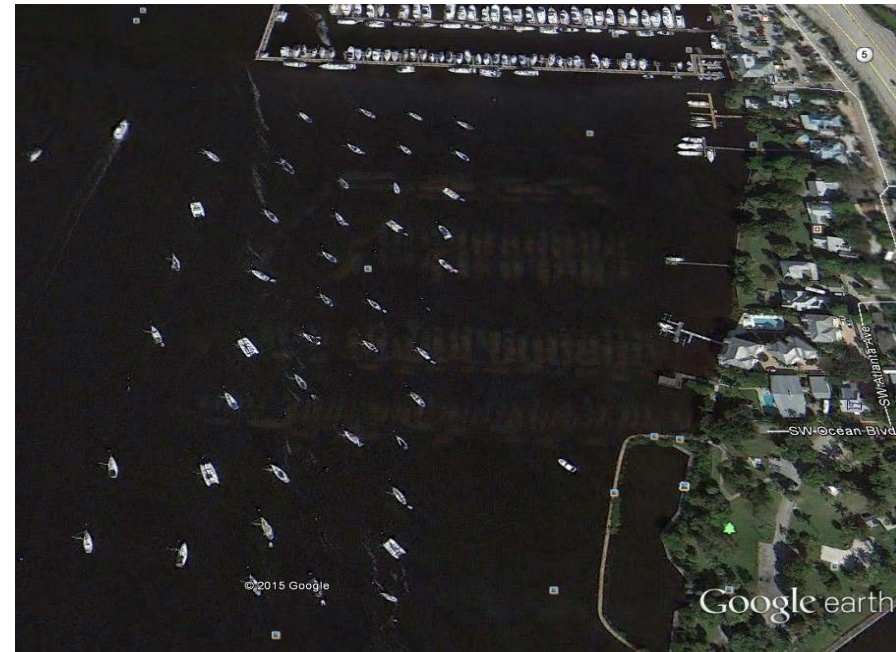
*SWERP Phase II fixes*

*Municipal Mooring Field General Permit\**

*WCIND General Permit\**

*UMAM*

\* Publication of final rule is pending

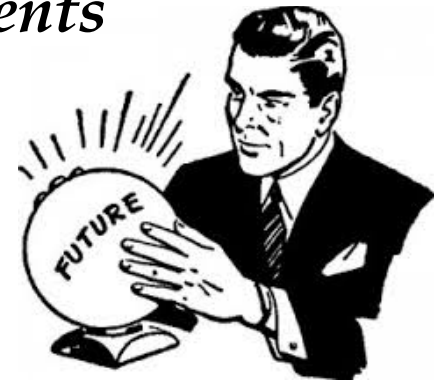




# Future Rulemaking

## *Chapter 18-21 (October 2015 ?)*

- eliminate appraisals for private easements*
- over water dining*
- delegations*



## *Chapter 18-14 (2016 ?)*

- Fines and penalties for non-compliance*

## *Chapter 18-20 (?)*

- minus four foot limitation for single family docks*



# Recap from past years

## 2012/2013 predictions

- ~~— Water related definition~~
- Floating amusement parks
- ~~— Open air dining~~
- Lease box survey
- ~~— Liveaboard definition~~

## 2013/2014 predictions

- ~~— Open air dining~~
- ~~— No easement appraisals~~
- ~~— No CE's for multi-slip docks~~
- ~~— Expanded delegation~~
- ~~— Electronic surveys~~

## 2014/2015 predictions \*

- ~~Over water, Open air dining~~
- ~~— No easement appraisals~~
- ~~— Electronic survey submittal~~
- ~~— Revised rule for fines~~
- ~~— Eliminate conservation easements for multi-family docks~~
- ~~— Expanded delegations~~
- ~~— Statutory fee updates~~

Rulemaking didn't occur

\* Concepts still being considered



# What's Next – 2015/2016

Over-water, Open-air dining and beverage service

Eliminate appraisals for private easements

Electronic submittal of surveys

Revised fines and penalties rule

Eliminate conservation easements for multi-family docks

Expanded delegations (pending since 2011)

Fee changes to match the statutory changes





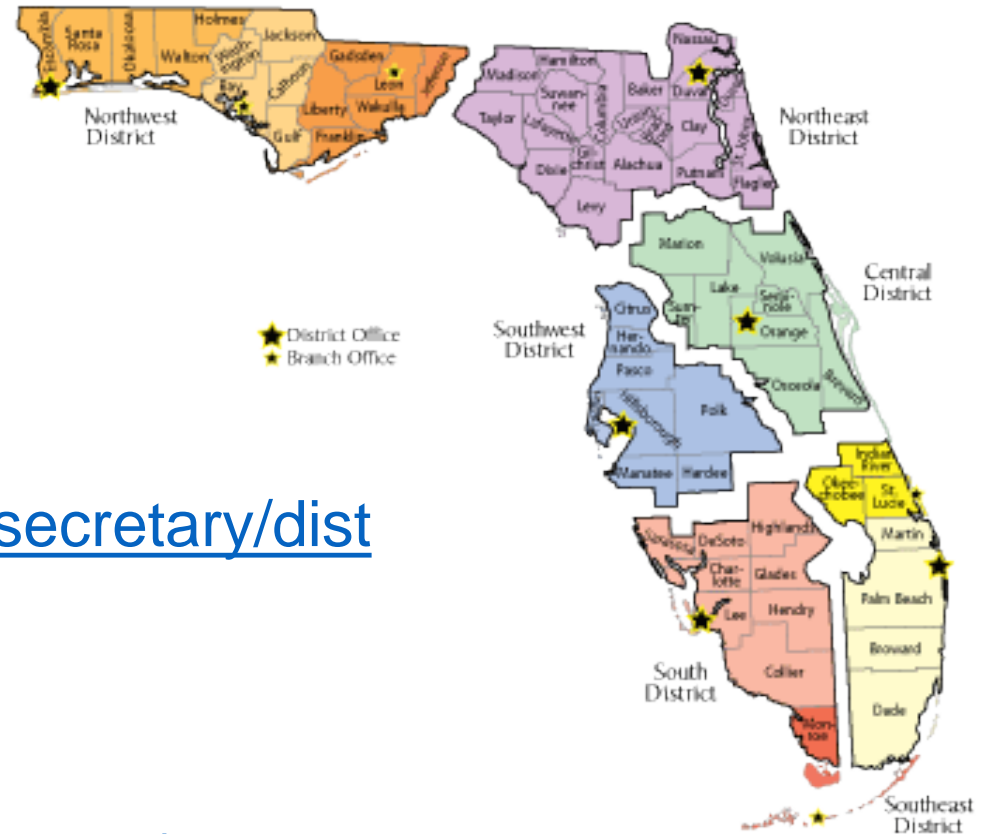
# Policy Updates

- Paperless processes
  - Electronic submittals and electronic filing with DSL
- Lease processing
  - Single family leases processed by DEP Districts
- Regulatory Certainty
- Priority is getting non-compliant facilities under lease
- Aquatic Preserve Society
  - Donations for public interest requirements
  - Funding for restoration projects and public access





# Web Information



## DEP District Offices

<http://www.dep.state.fl.us/secretary/dist>

## Helpful Websites

<http://www.dep.state.fl.us/water/wetlands>

<http://www.dep.state.fl.us/water/wetlands/erphelp>



# Contact Information

Timothy Rach, Administrator  
Submerged Lands & Environmental Resources  
Coordination Program

Timothy.Rach@dep.state.fl.us  
850.245.8015 office

