

**ATKINS**

# **Planning, Permitting, and Mitigation for Port Facilities and other Coastal Infrastructure**

**Don Deis  
Atkins  
Jacksonville, FL**

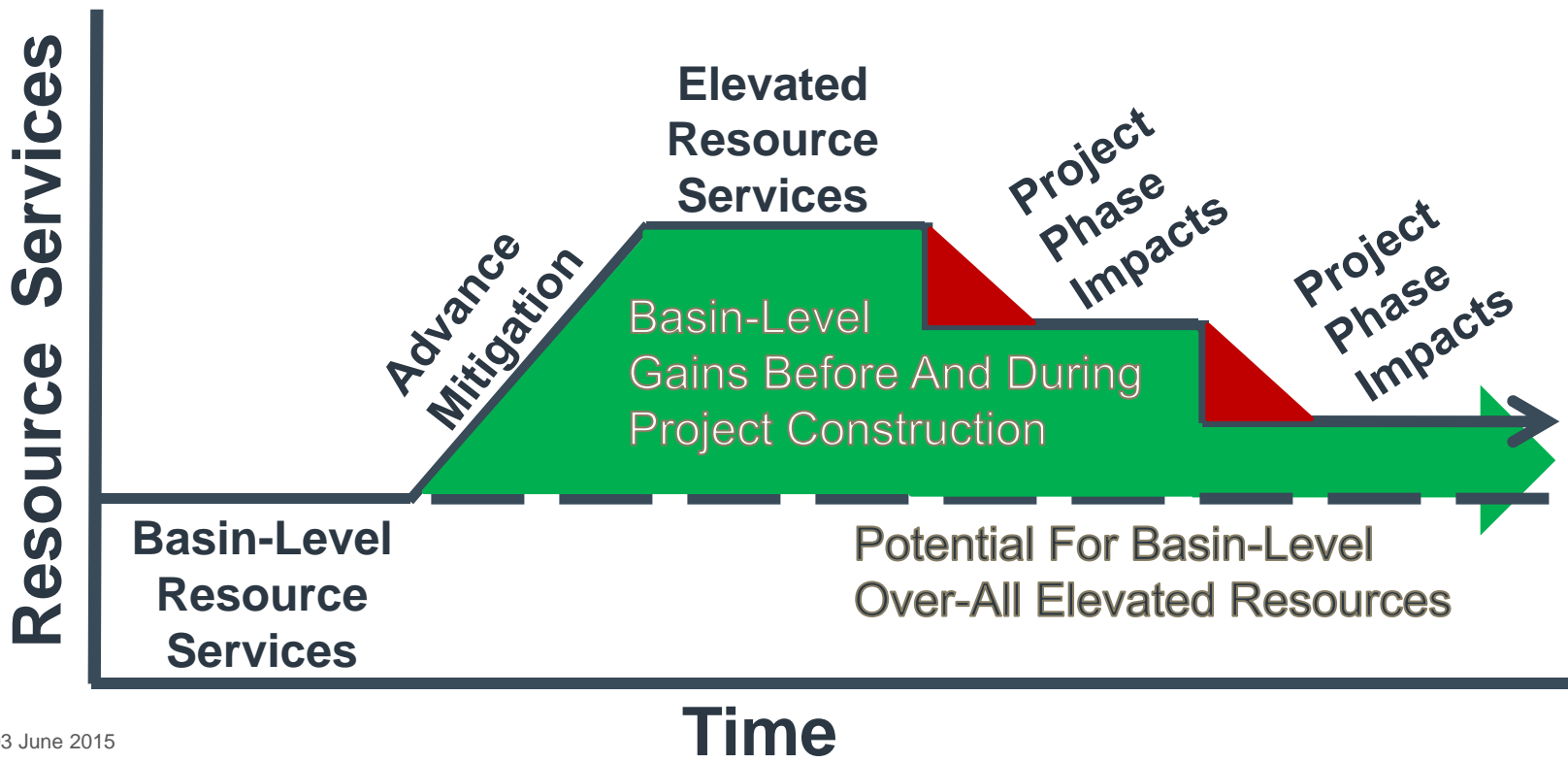
03 June 2015



# Environmental Assumptions

- Most Ports and much of the coastal infrastructure in Florida is located within areas that contain sensitive resources.
- Growth of Ports and the need to expand and rehabilitate coastal resources may have unavoidable impact to environmental resources.
- Substantial mitigation may be needed to offset these projected impacts.
- As a part of long-term planning, a proactive mitigation strategy should be developed to effectively accomplish these expansion and rehabilitation goals.
- The mitigation objective should be to plan, permit, construct, and achieve success of mitigation prior to initiating projects (eliminate time-lag and risk).
- There are typically many basin-level opportunities to accomplish mitigation goals and basin-level restoration goals.

# Reduced Resource Loss from Starting Mitigation Early in Project Planning Process



# Tools Required

- **Chapter 373.4137, Florida Statutes**
  - “...environmental mitigation impact for the impact of transportation projects...can be more effectively achieved by regional, long-range mitigation planning rather than on a project-by-project basis.”
  - Currently only available to Chapter 248 and 349 transportation authorities
  - This does not include Port authorities

# Tools Required (cont.)

- **Regional Offsite Mitigation Areas (ROMA)**
  - Most Port Authorities are County agencies that could cooperate with County Environmental Departments to create restoration/mitigation programs
- **Basin restoration plans**
  - Basin Management Action Plans
  - Environmentally Sensitive Lands Programs
  - Comprehensive Conservation Plans (Wildlife Refuges, National Estuary Programs)

# Tools Currently Available for Transportation Projects

- **The Efficient Transportation Decision Making Process (ETDM)** – expedite project delivery times and facilitate a refined approach to mitigation, especially coastal habitats.
  - Consistent with the streamlining objectives of the Transportation Equity Act of the 21<sup>st</sup> Century (TEA-21) and Moving Ahead for Progress in the 21<sup>st</sup> Century Act (MAP-21)

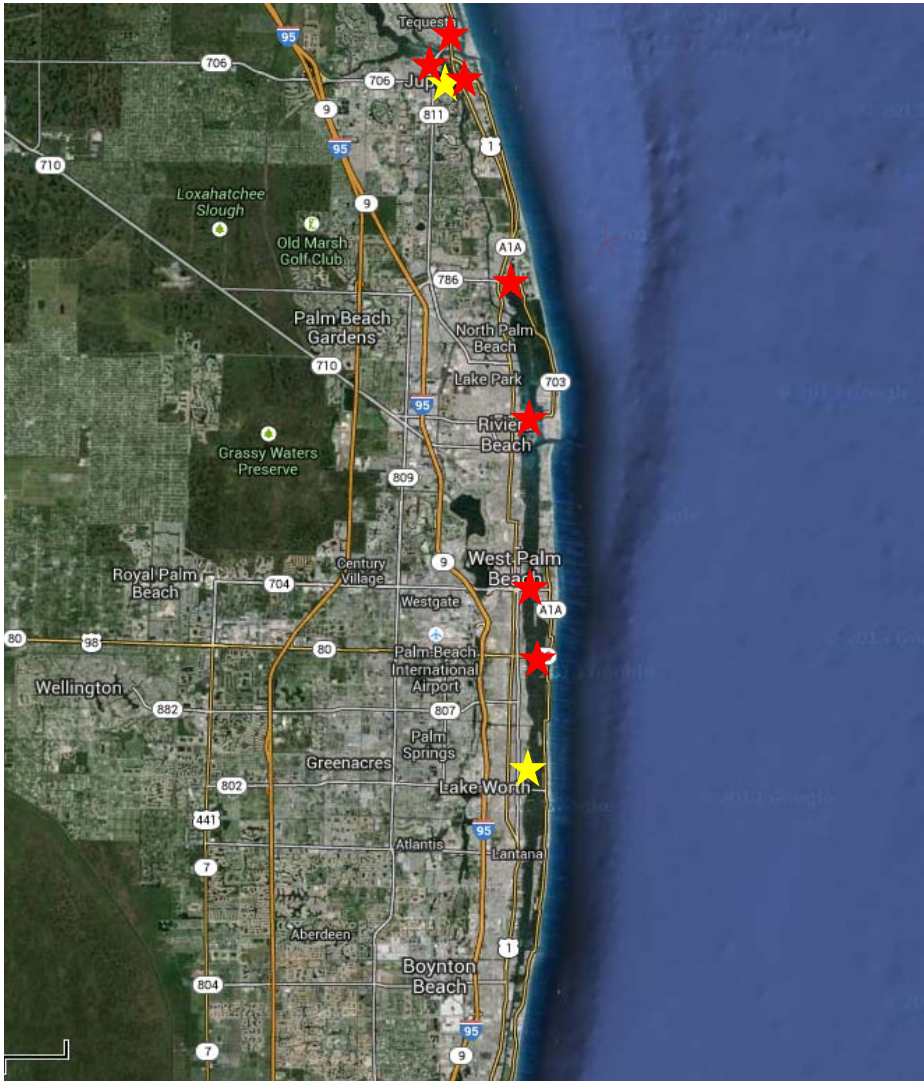
# Tools Currently Available for Transportation Projects

- **Project Development & Environment (PD&E) study phase**
  - Can include commitments to mitigate at selected mitigation site(s)
  - Involves early coordination with stakeholder, regulatory, and resource agencies

# Current Examples

## FDOT District 4





- ★ Mitigation Projects
  - Fullerton Island
  - Snook Island Phase II

- ★ Bridge Projects

# Snook Islands Phase II

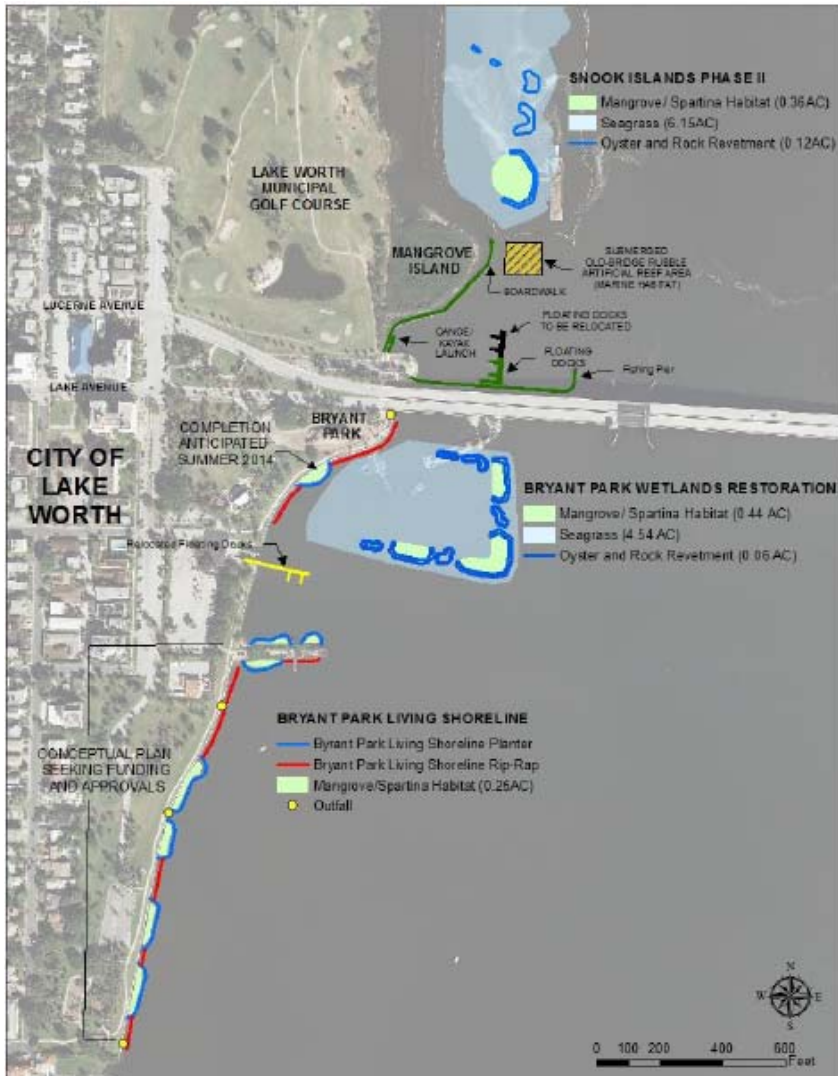
Palm Beach County ERM & FDOT

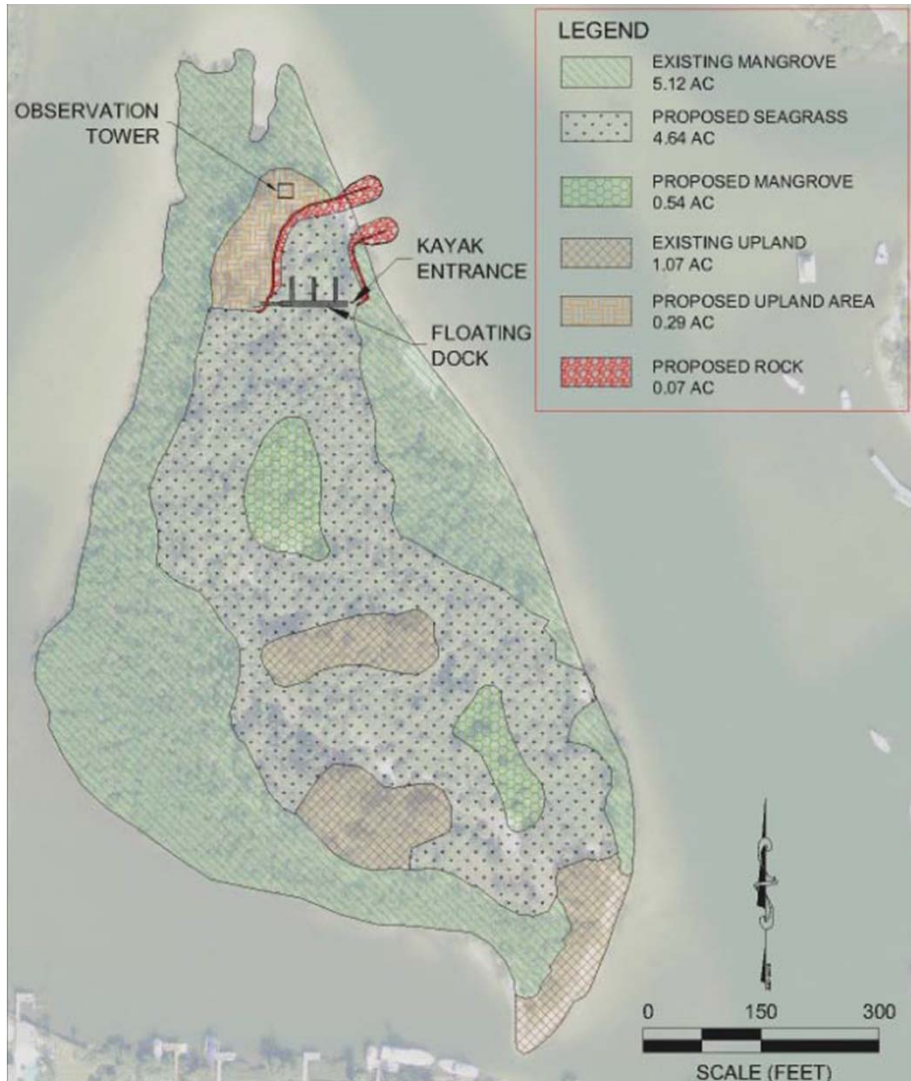
## Creation of:

- 6.15 acres seagrass
- 0.36 acres mangroves
- 0.12 acres oyster reef

## Mitigation for:

- U.S. Highway 1 Bridges
- Flagler Memorial Bridge
- Little Blue Heron Bridge
- Little Lake Worth Bridge
- Southern Boulevard Bridges





# Fullerton Island

Palm Beach County ERM & FDOT

Creation of:

4.64 acres seagrass

0.54 acres mangroves

Mitigation for:

- SR-5/US-1 and SR-A1A Pedestrian Overpass Bridge over the Loxahatchee River
- SR-5/US-1/Federal Hwy Bridge from CR-A1A to Beach Road

# Current Examples

## Port Manatee



# Perico Bayou Mitigation Site

Manatee County  
Port Authority &  
Manatee County  
EMD

ATKINS

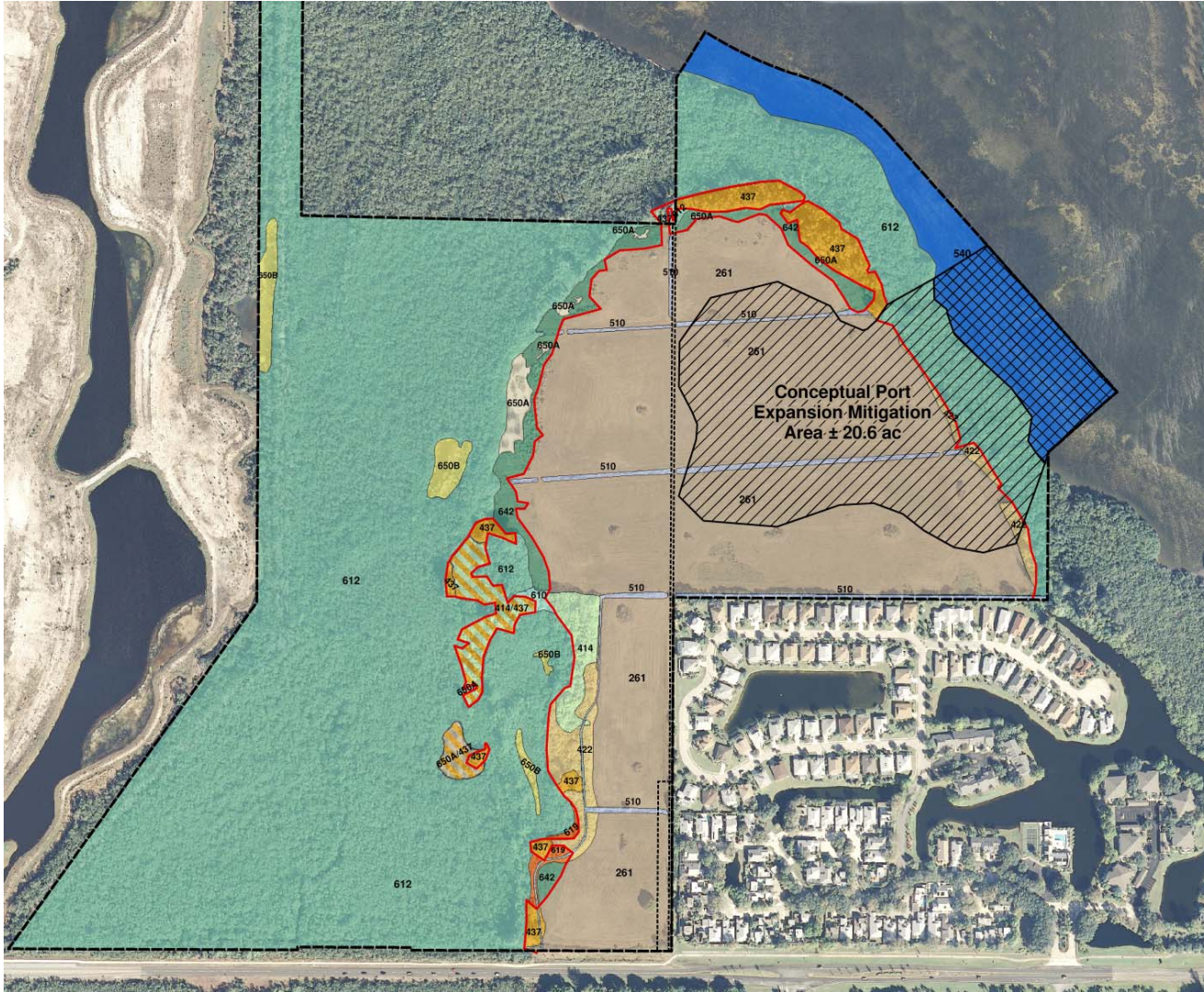




# Perico Bayou Mitigation Opportunity

ATKINS

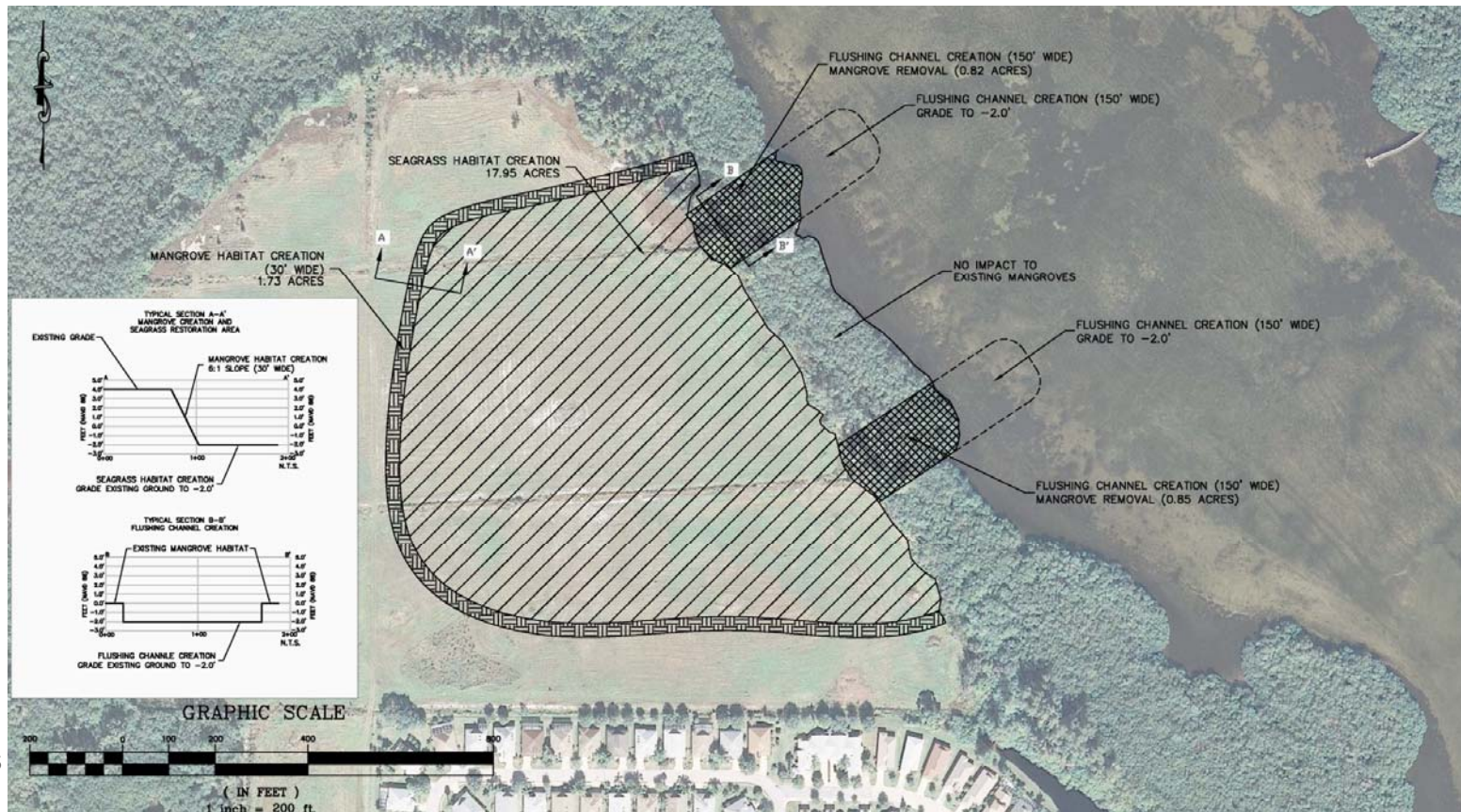




# Perico Bayou Conceptual Plan



# Perico Bayou Seagrass Basin



03 June 2015