



Collaboration on Complex Regional Issues

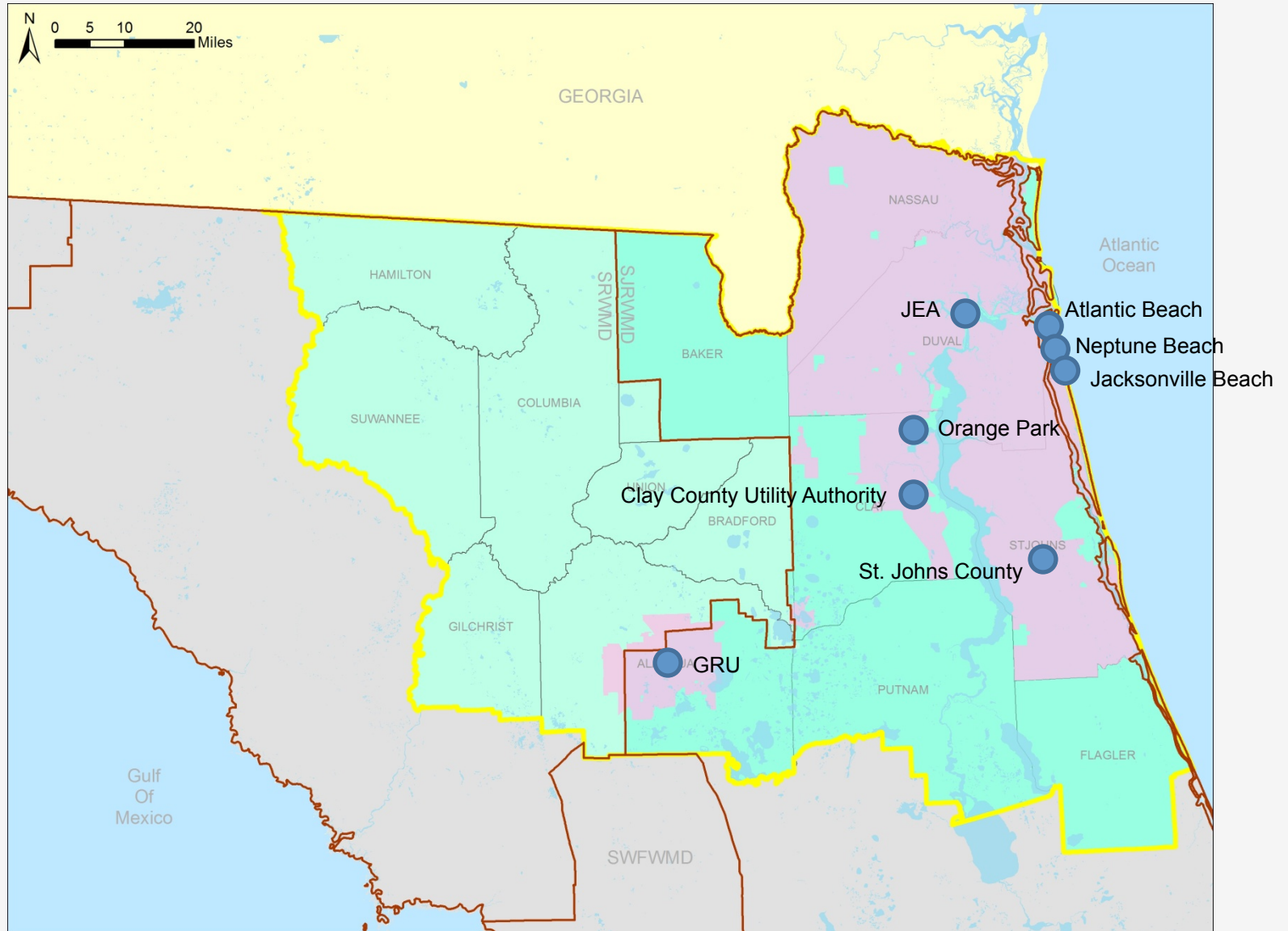
North Florida Utilities Coordinating Group (NFUCG)

Paul Steinbrecher, PE

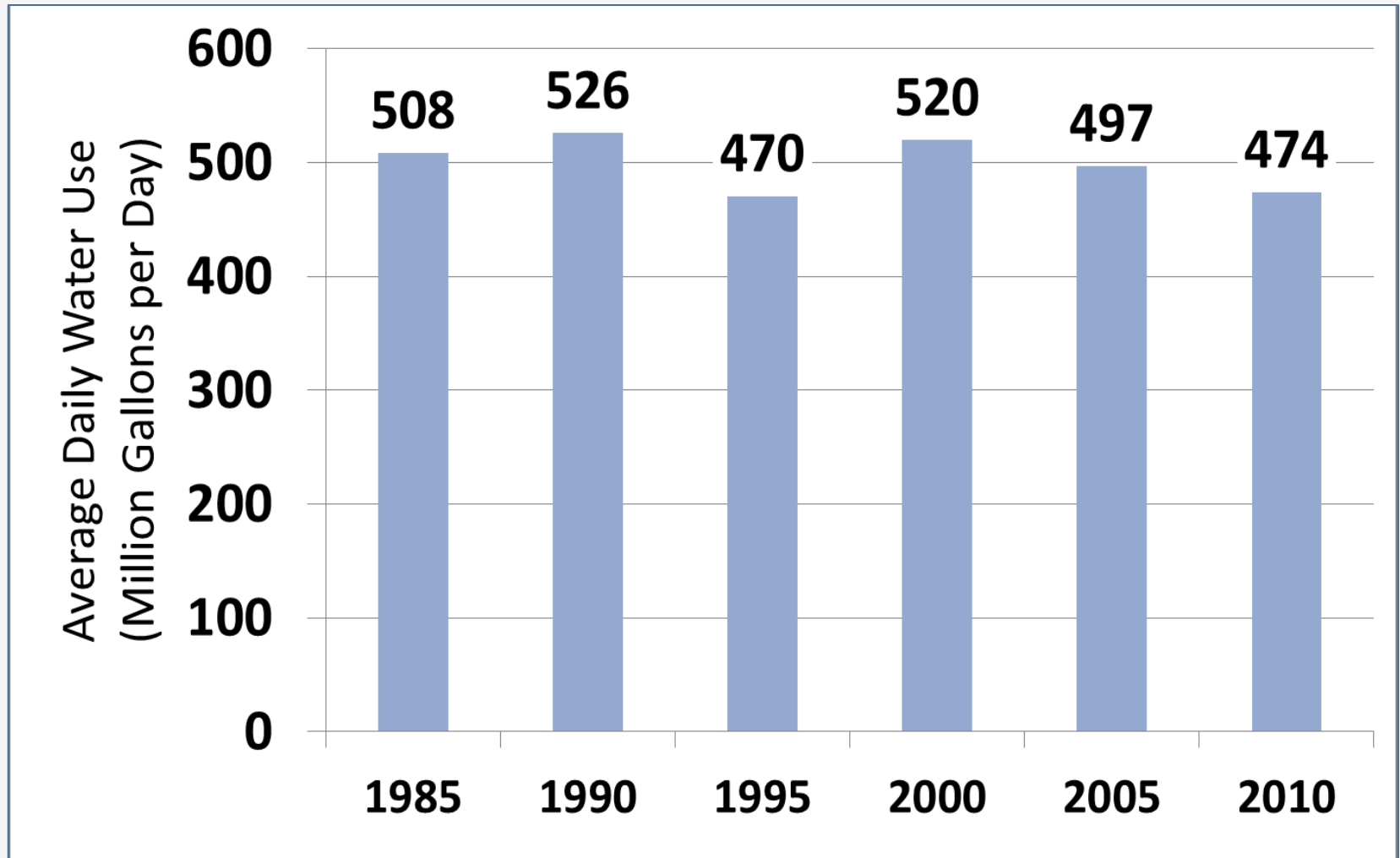
29th Chamber Environmental Summer School

North Florida Water Challenges

North Florida Planning Region



North Florida Planning Region Water Use

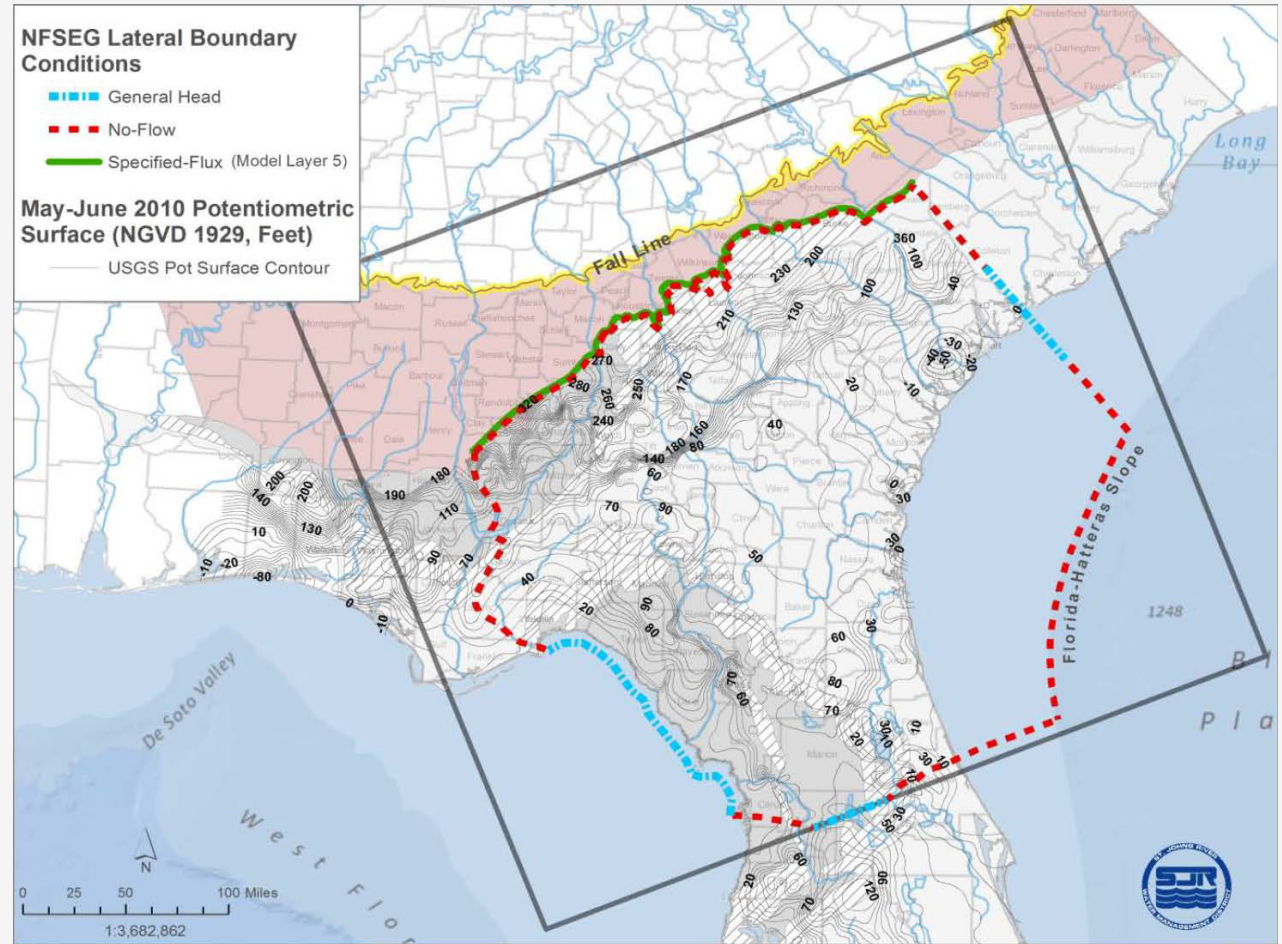


Regional Issues for Collaboration

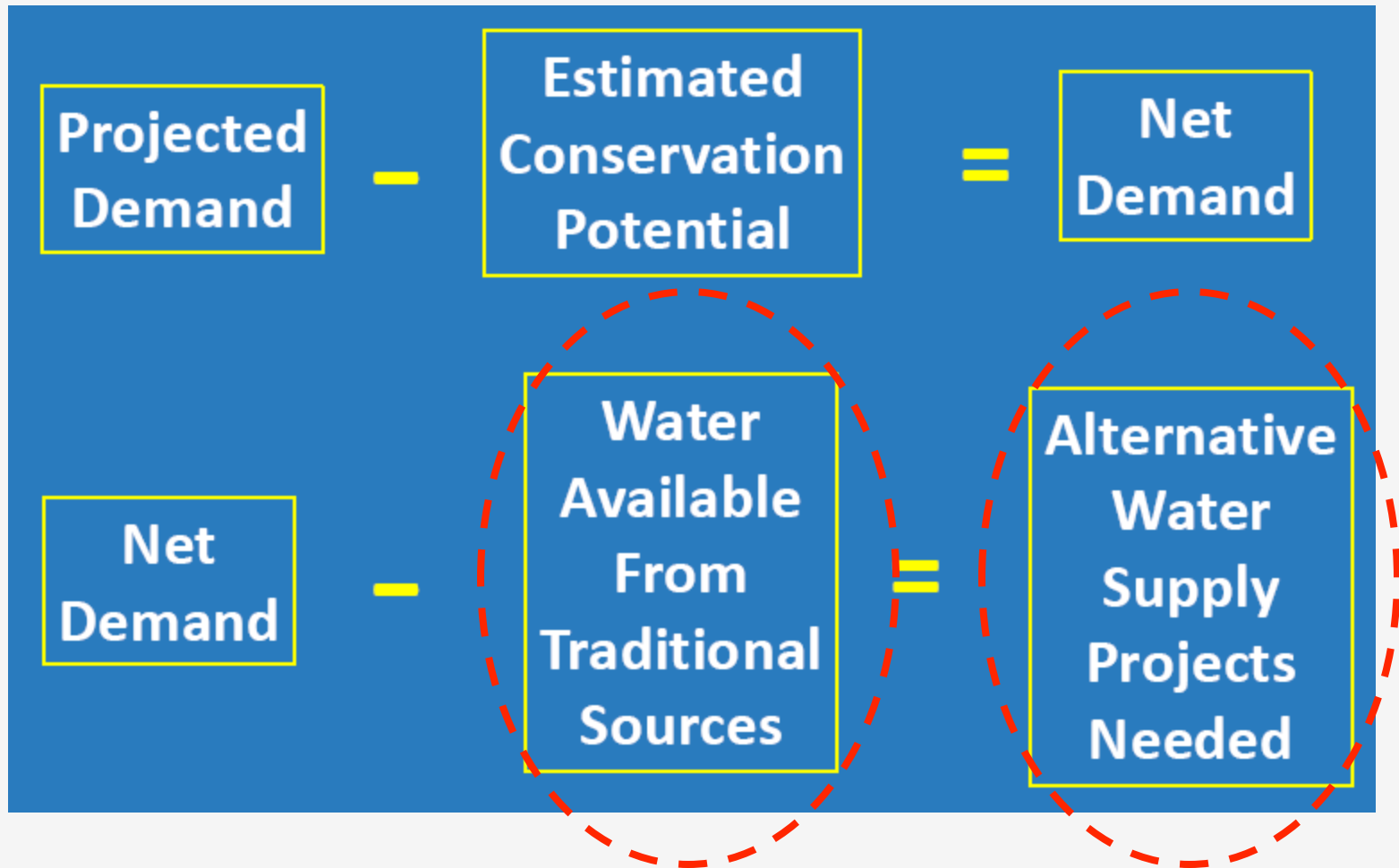
- Groundwater model development
- Regional water supply planning
- MFL development and re-evaluation
- Prevention and recovery strategies

Complex & Massive Groundwater Model

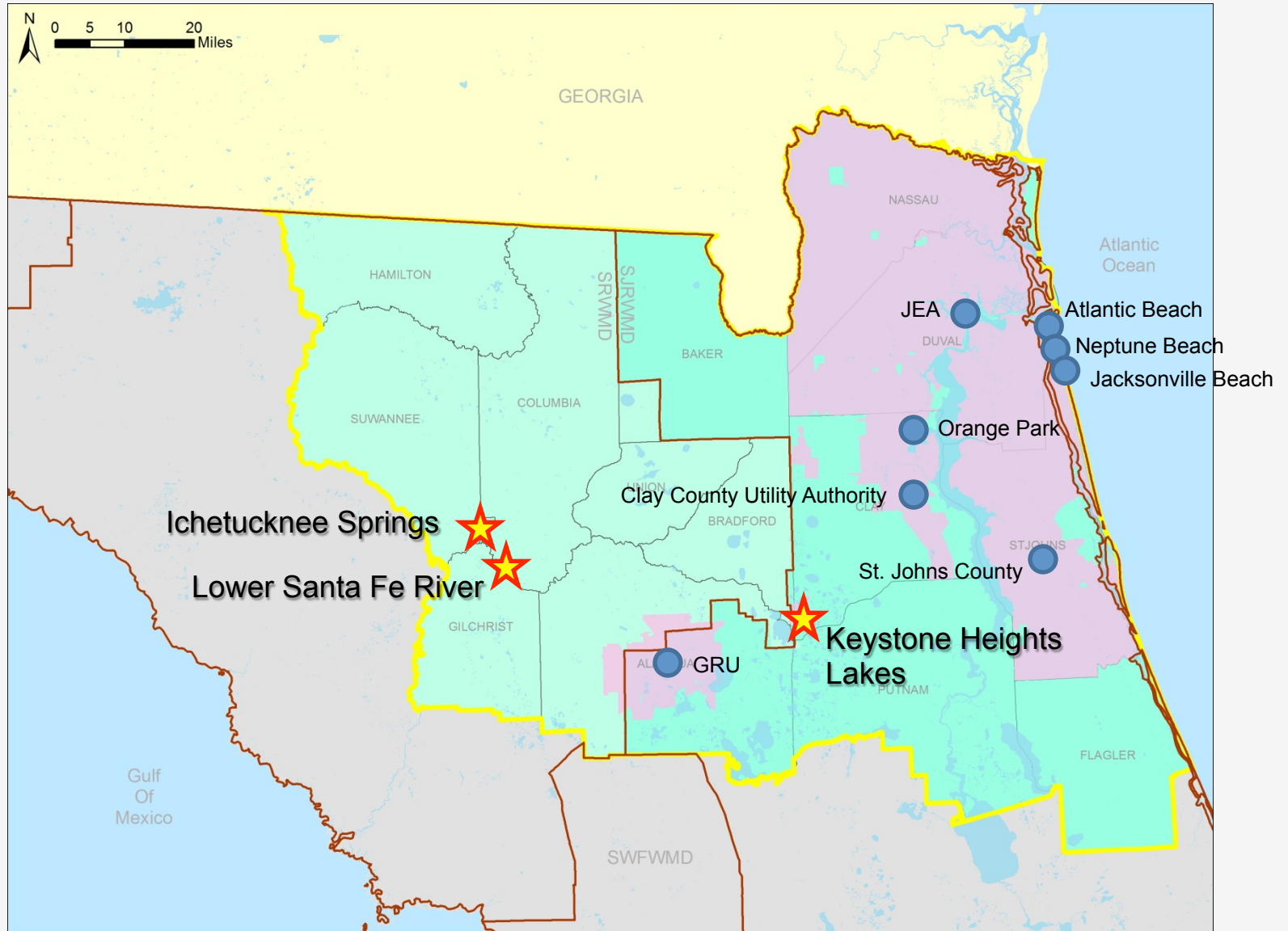
- Largest and most complex model by SJRWMD
- Basis of all regional evaluations



Water Supply Planning for Future Needs



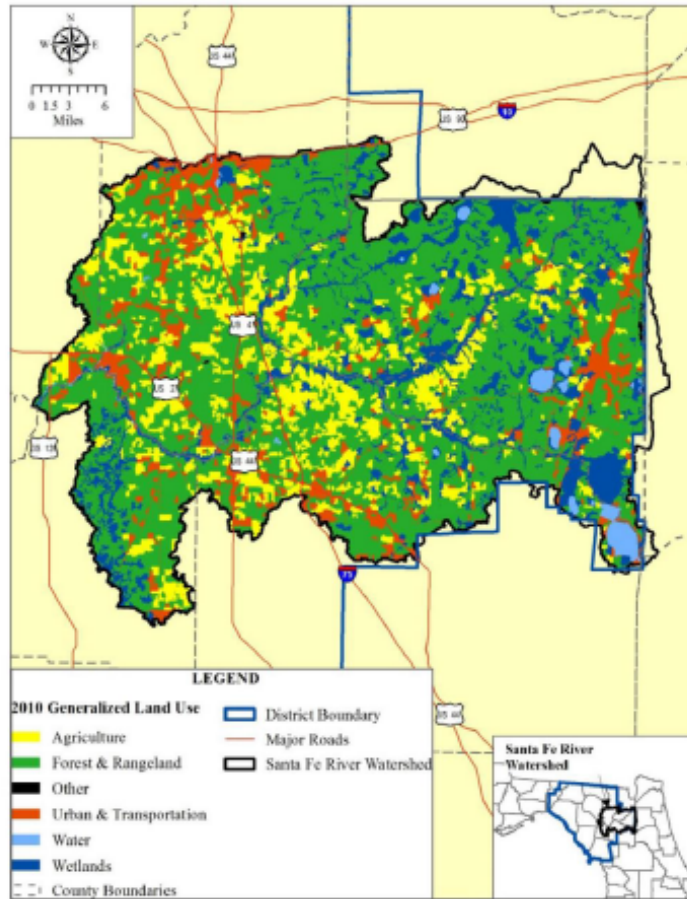
MFLs Being Developed/Re-Evaluated



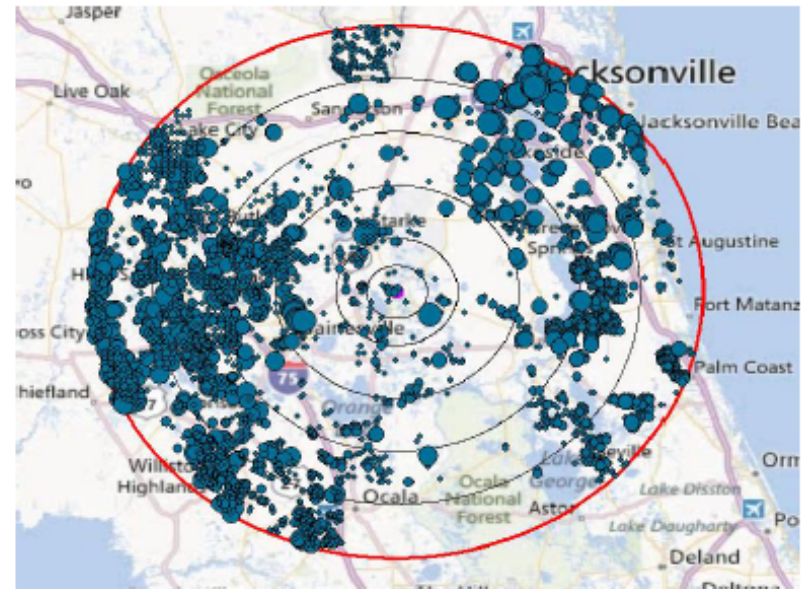
MFLs Protect from Manmade Impacts

Man-Made Impacts

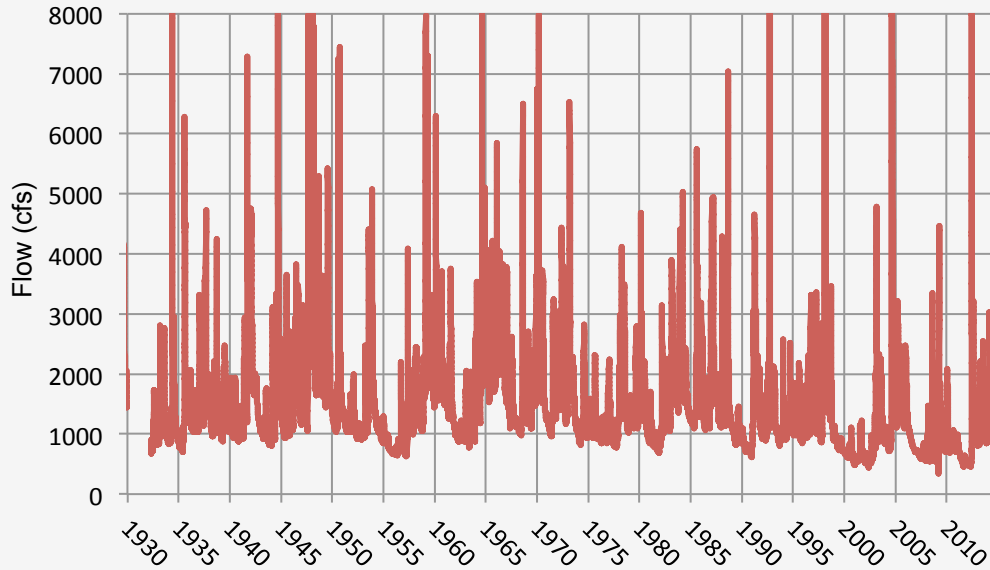
Land Uses



Consumptive Uses

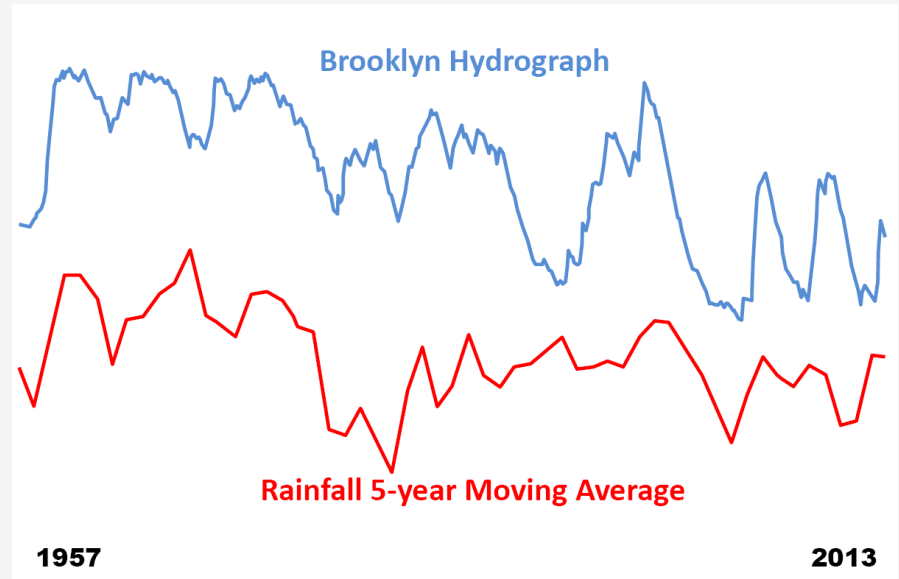


MFLs for Highly Variable Hydrology

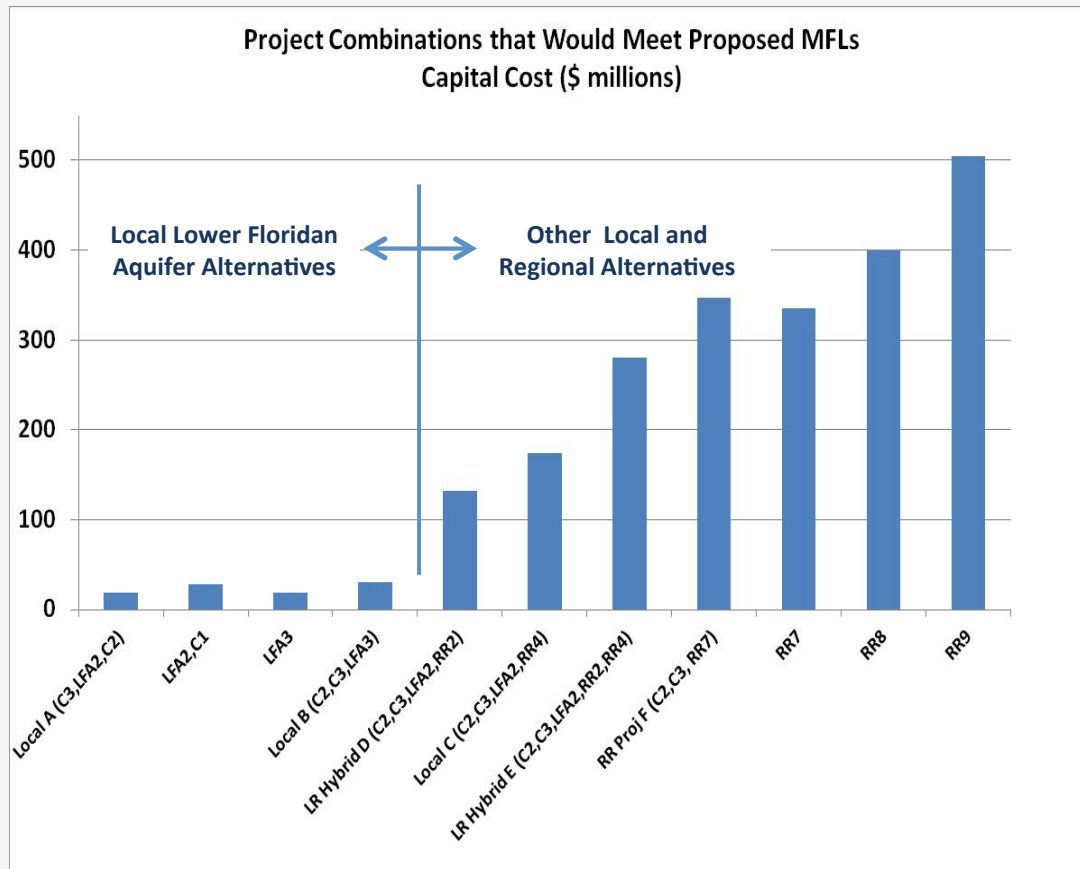


- Lower Santa Fe River (springs and surface water) in the SRWMD

- Lake Brooklyn (sandhill lake) in the SJRWMD

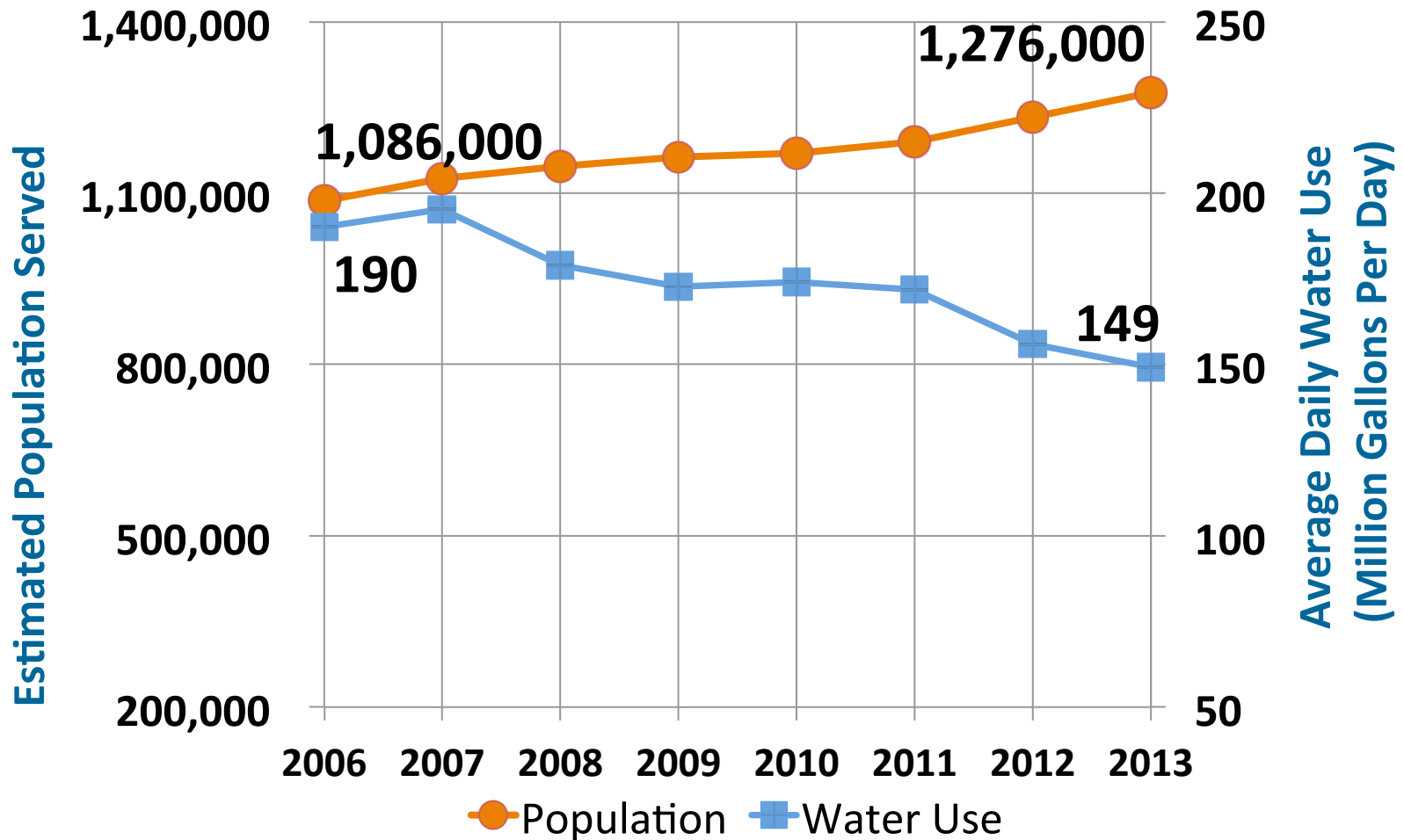


Equitable Prevention and Recovery Strategies



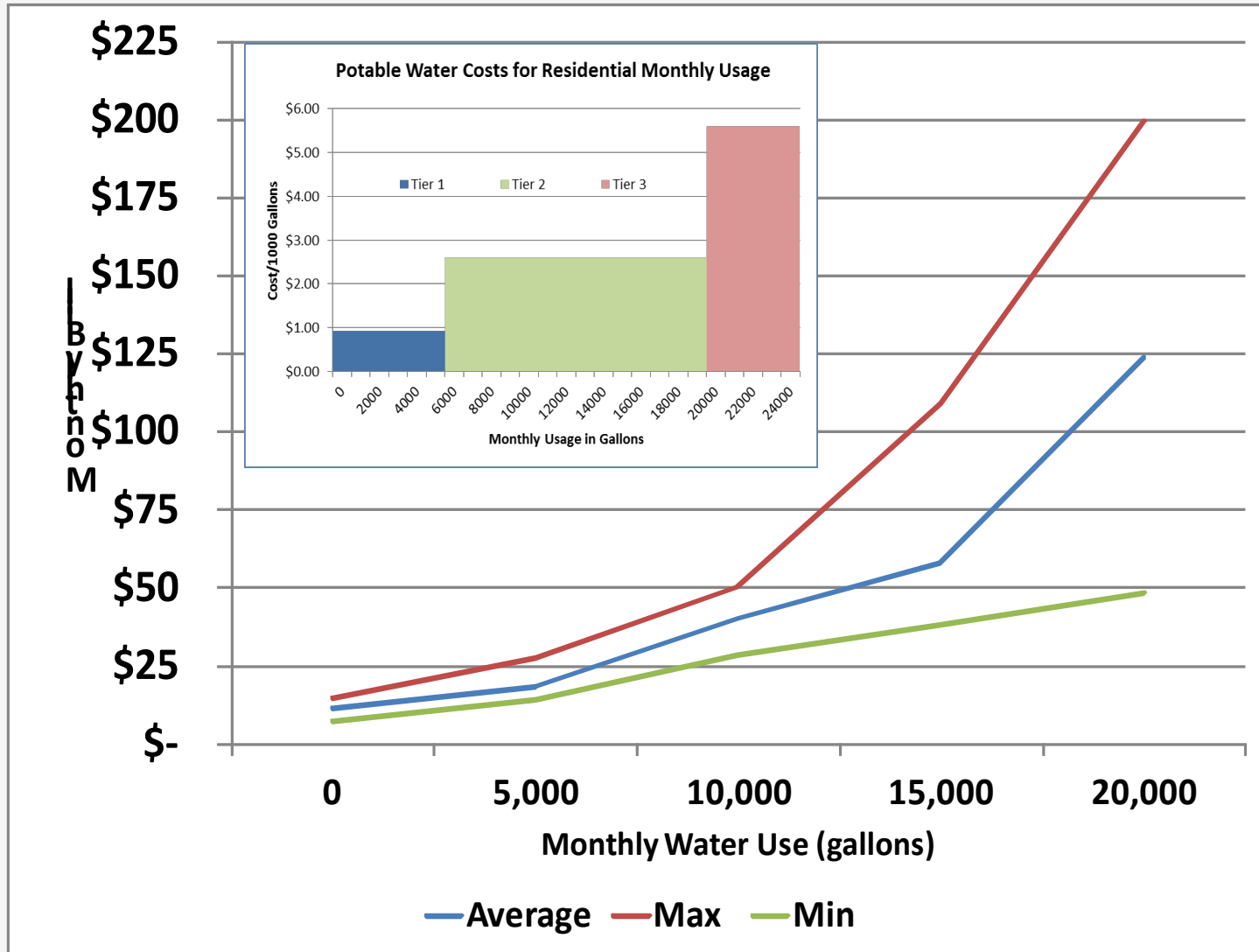
- Seeking economical solutions
- All users contribute to impacts - Costs for solutions must be shared
- Apportionment results in equitable contributions

NFUCG Committed to Efficient Use Through Conservation/Rates and Reuse



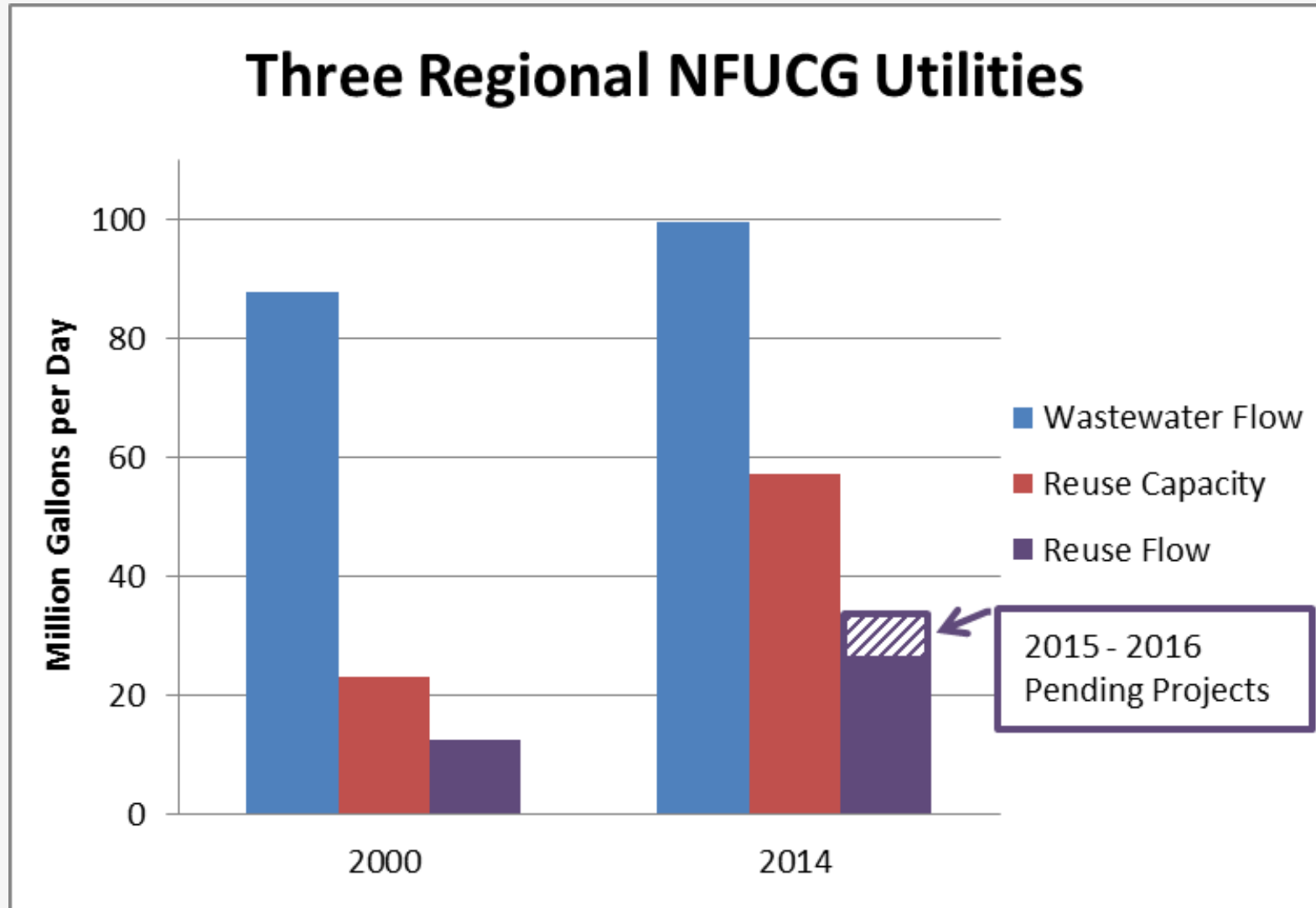
Water Rates Reflect Value of Resource

Reaching Point of Diminishing Returns



Reuse Capacity Has Expanded Significantly

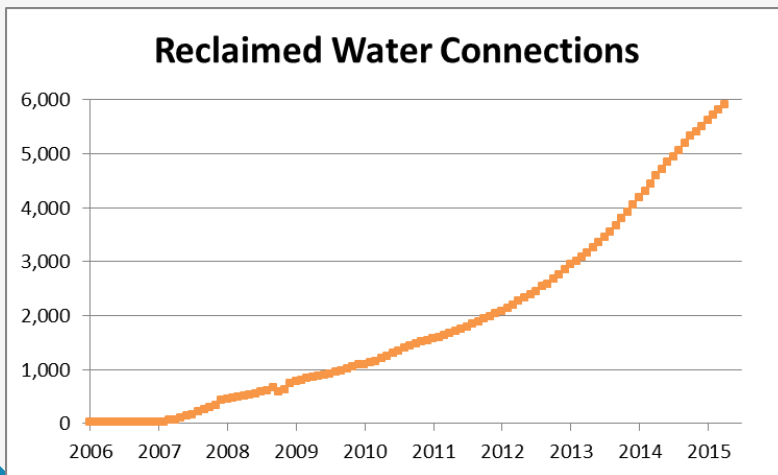
Opportunities Vary by Location



NFUCG Committed to Reuse

JEA Example

- ~\$100M investment to date
- >6,000 customers
- FY14 Avg Daily Flow 12.5 MGD
- Over 190 miles of pipe
- 2015 York Award Winner



North Florida Utility Group Goals

- Continued regional cooperation to leverage financial and technical resources
- Application of best science to complex and costly decisions
- Support for practical solutions for environmental sustainability
- Continued leadership in conservation and reuse