



NNC: The Reality of the Situation

Daniel Hammond
Senior Consultant



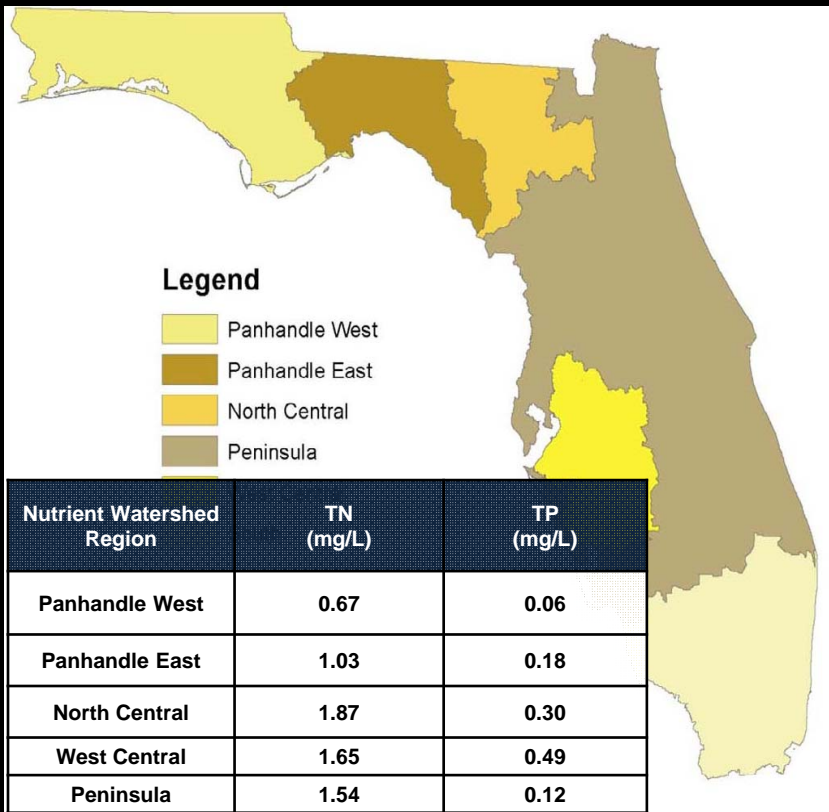


NNC: The *Biology* of the Situation

Daniel Hammond
Senior Consultant



If the biology of the system is ok, the nutrients must not be causing a problem.



- > Exotic aquatic vegetation not greater than 25%
- > Mean C of C score greater than 2.5
- > Benthic algae coverage of 6 mm or greater not more than 25%
- > Benthic algae species is not nuisance or undesirable (if more than 20 % coverage observed)
- > Average SCI score greater than 40
- > Neither of the two most recent SCI scores less than 35
- > Annual geometric mean chlorophyll-a less than 20 $\mu\text{g/L}$
 - Between 3.2 and 20 $\mu\text{g/L}$ – site specific conditions must indicate nutrients not an issue
 - No increasing trend observed

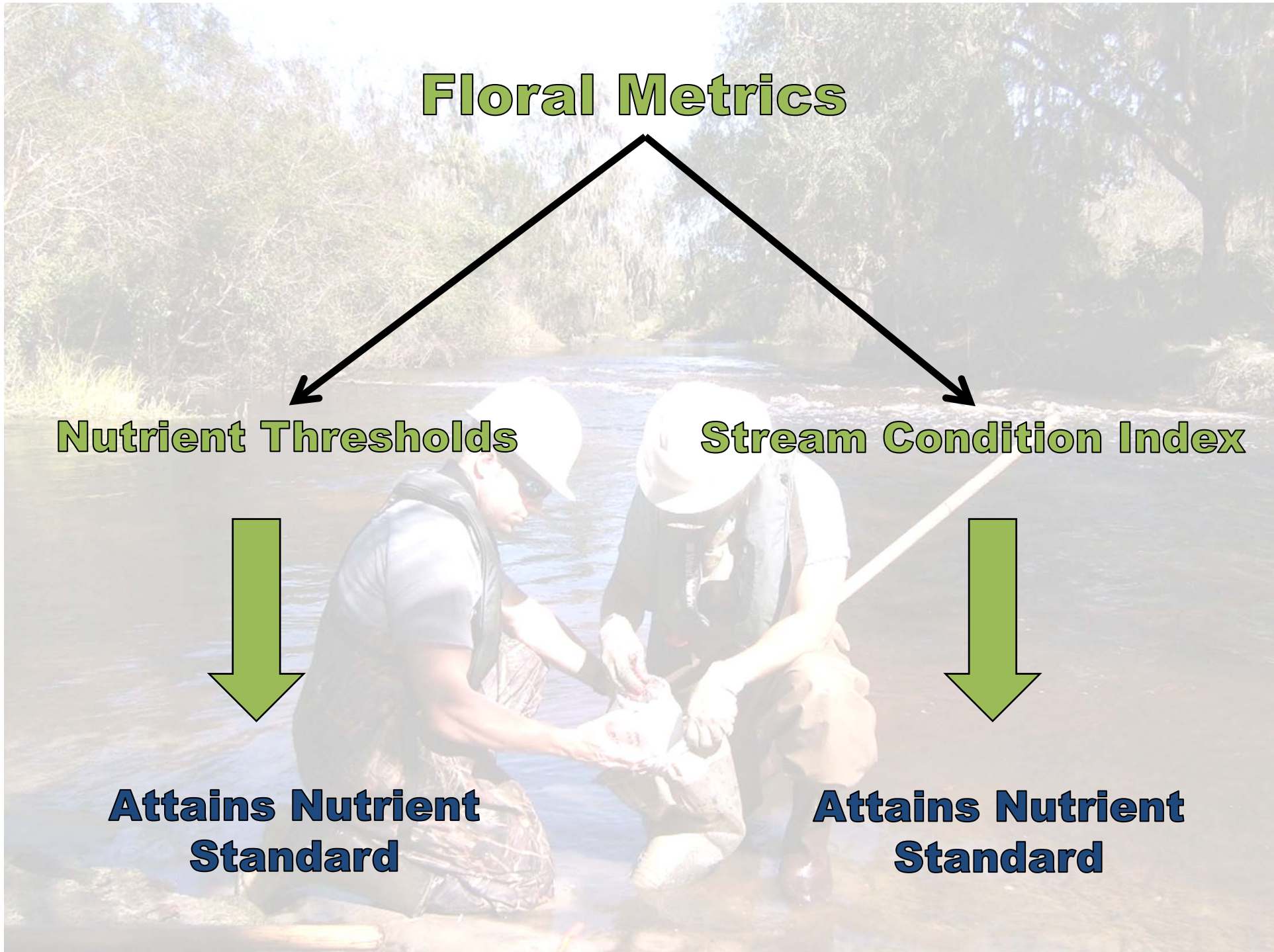
Floral Metrics

Nutrient Thresholds

Stream Condition Index

Attains Nutrient Standard

Attains Nutrient Standard



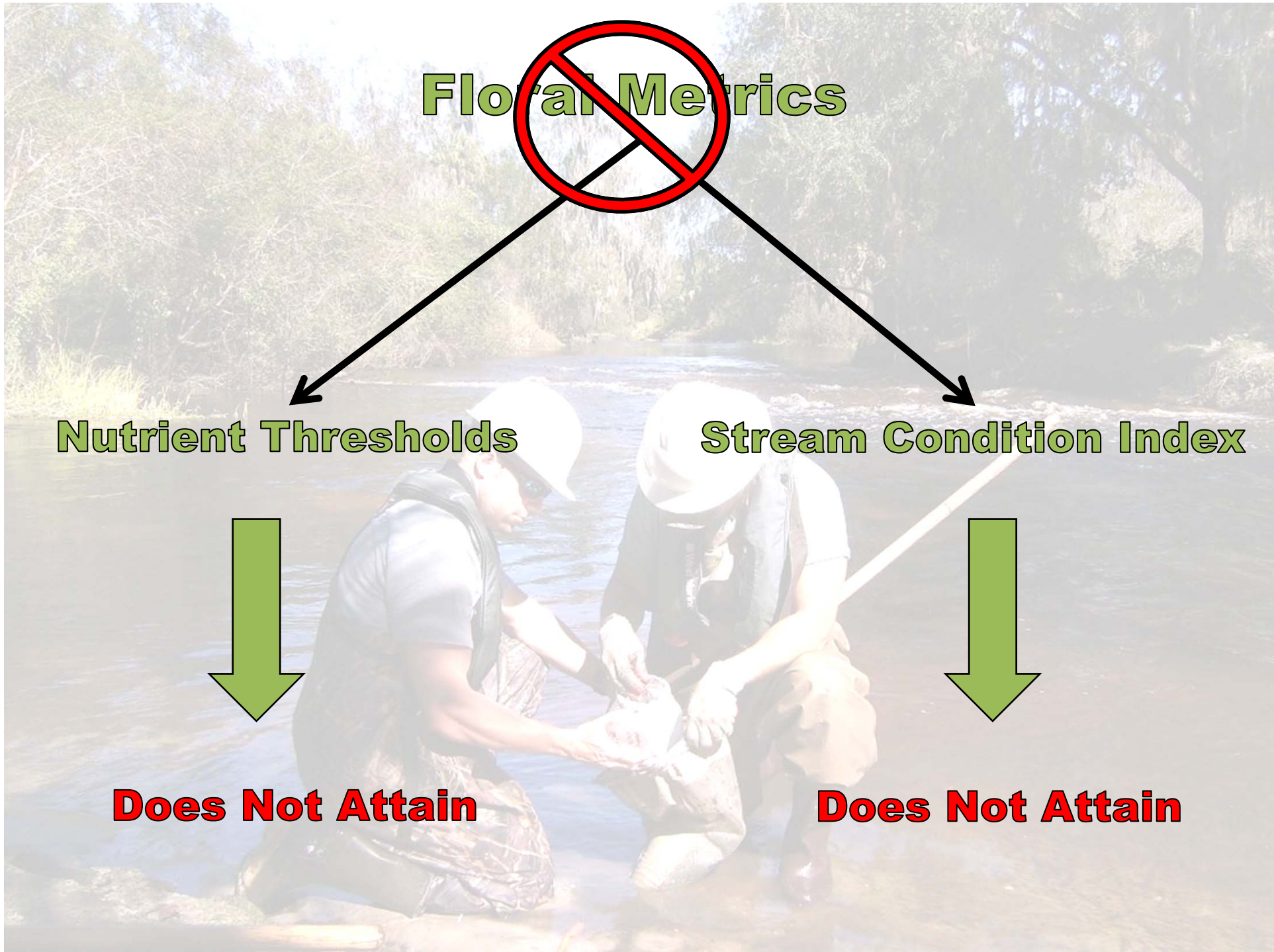
~~Floral Metrics~~

Nutrient Thresholds

Stream Condition Index

Does Not Attain

Does Not Attain



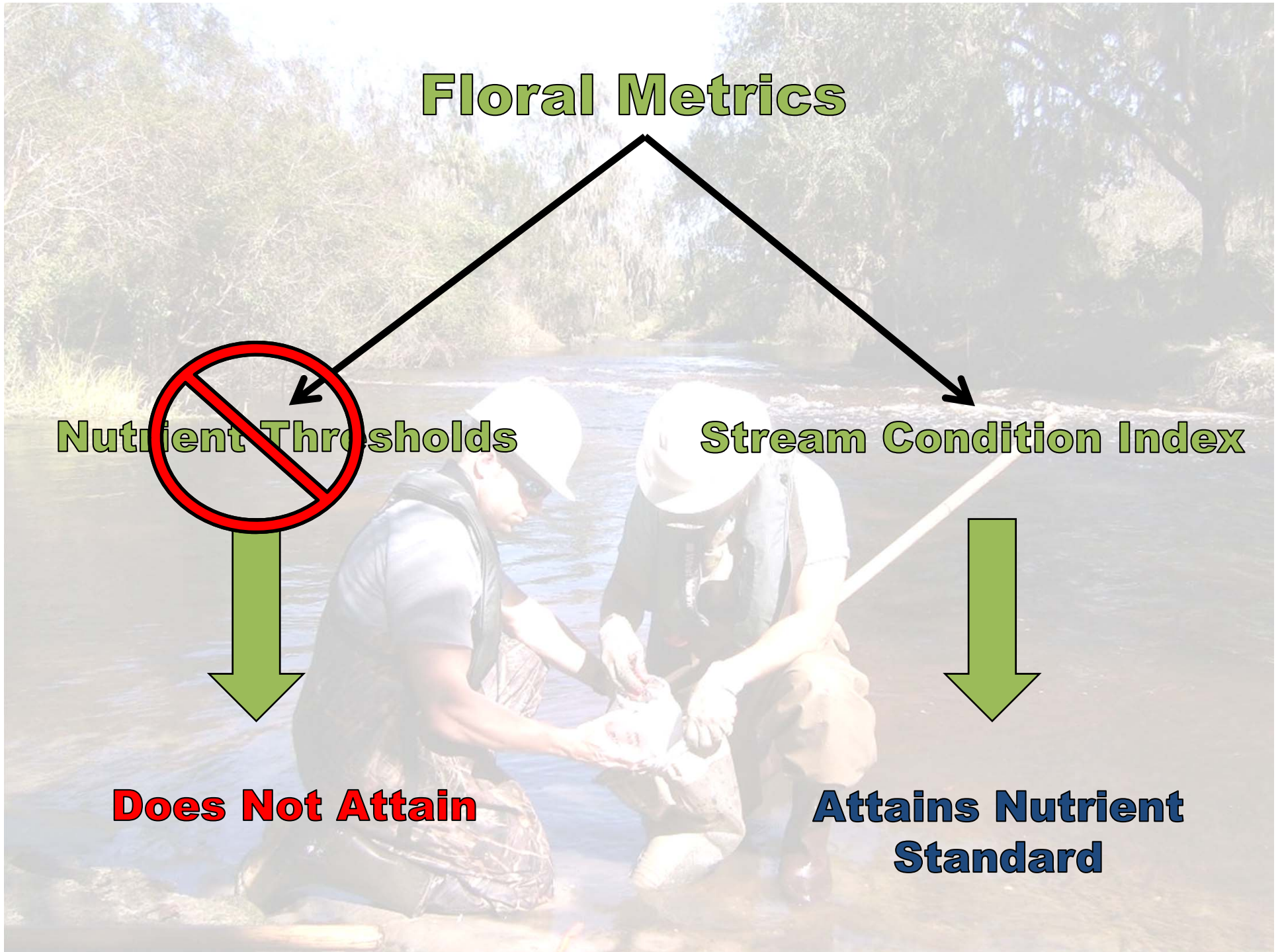
Floral Metrics

Nutrient Thresholds

Stream Condition Index

Does Not Attain

Attains Nutrient Standard



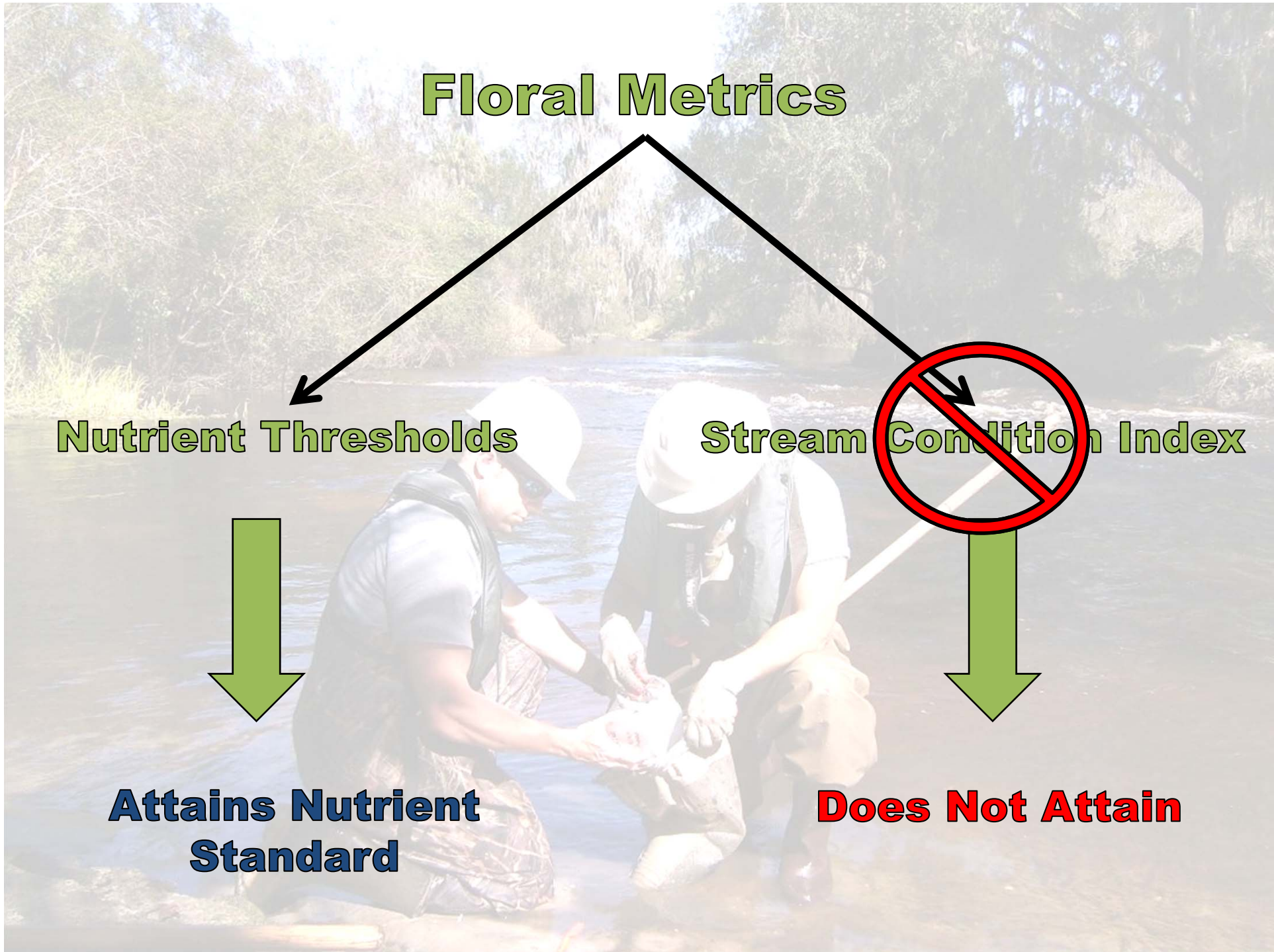
Floral Metrics

Nutrient Thresholds

Stream Condition Index

Attains Nutrient Standard

Does Not Attain



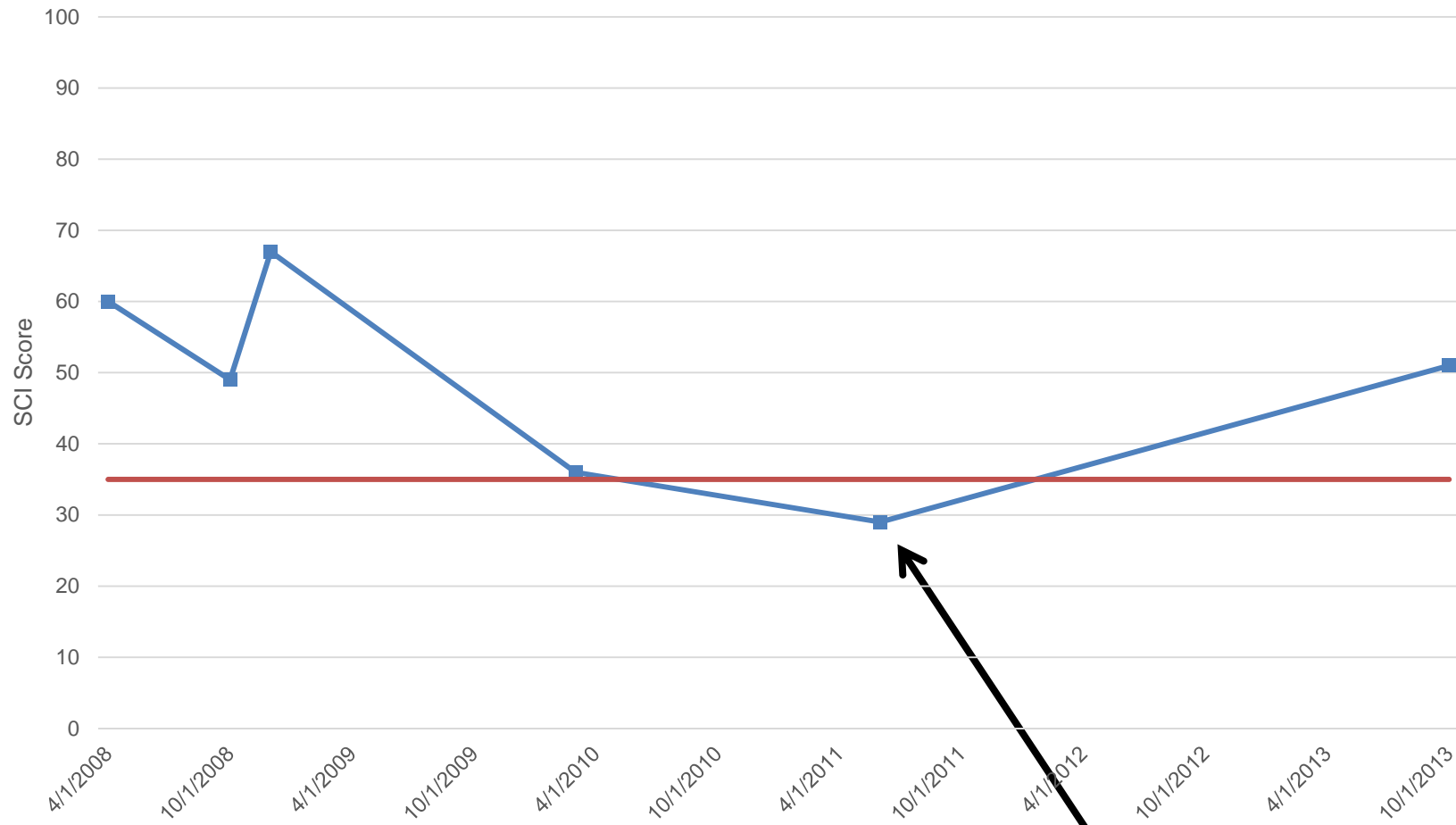


A photograph of two environmental scientists in a river. They are wearing white hard hats, safety glasses, and life jackets. They are kneeling in the water, focused on a white container they are holding together. The river is surrounded by dense green trees and vegetation. The text 'Data Quality' is overlaid on the left side of the image, and 'Data Integrity' is overlaid on the right side. At the bottom, a large white text box contains the message: 'You have the power to make a good site fail, but you cannot make a bad site pass!'

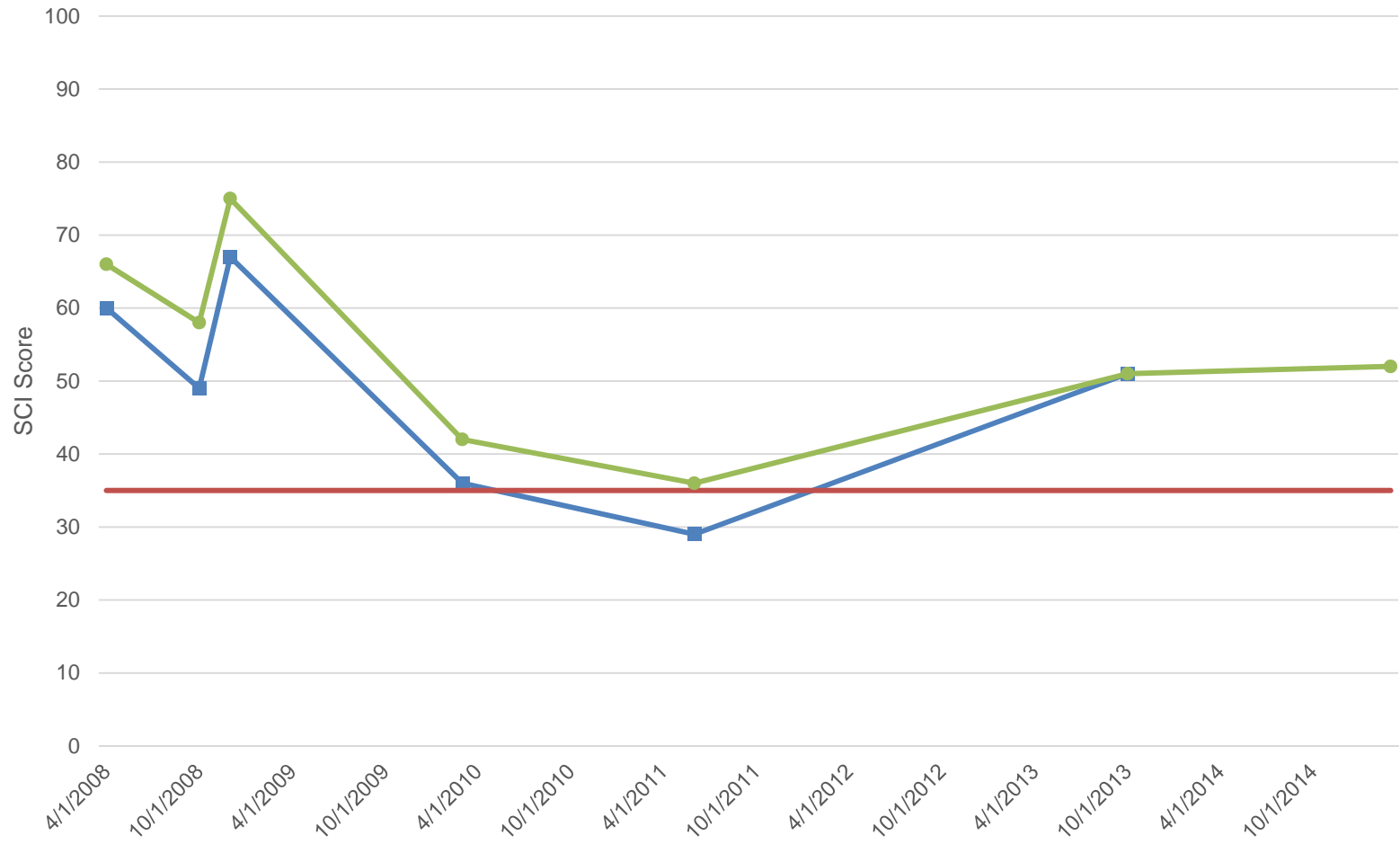
Data Quality


Data Integrity

**You have the power to make a good site fail,
but you cannot make a bad site pass!**



Stream below 7Q10
flow during sampling



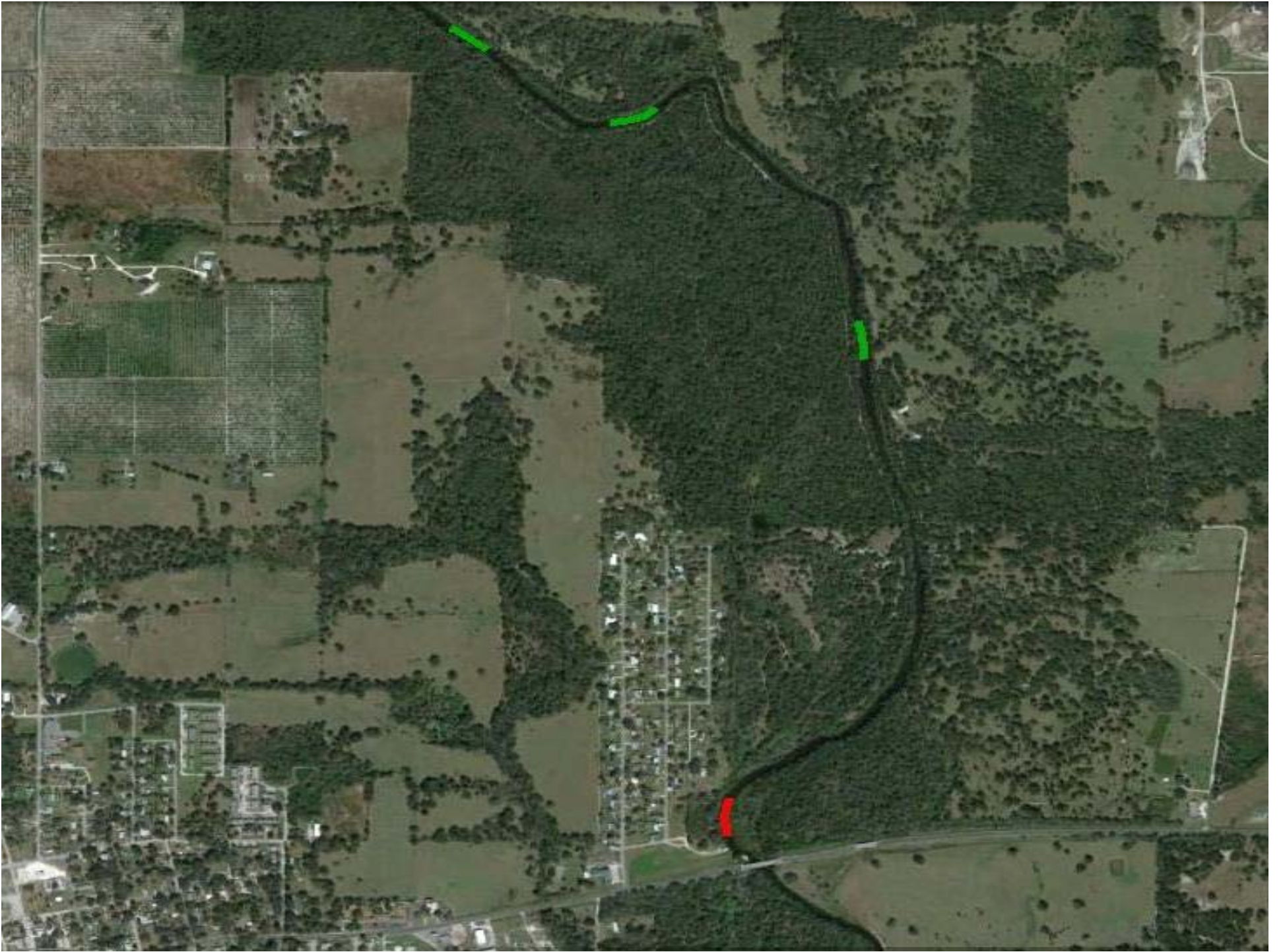
An aerial photograph of a forested area. A road runs diagonally from the top left towards the bottom right. A red line is drawn on the road, indicating a survey site. In the upper left, there are some buildings and a parking lot. The text 'Rapid Periphyton Survey' is overlaid on the right side of the image.

Rapid Periphyton Survey

January 2011	Fail
February 2011	Pass
March 2011	Fail
May 2011	Pass
June 2011	Fail
August 2011	Pass



Linear Vegetation Survey



What is a Stream?



January 2014



Swamp Smart Weed

April 2014

Upland Species Moving In



May 2014



September 2014



Numeric Interpretations Of The Narrative Nutrient Standard

